



Actual exam question from Juniper's JN0-103

Question #: 1

Topic #: 1

[\[All JN0-103 Questions\]](#)

---

Which command verifies configuration syntax without applying the changes?

- A. commit confirmed
- B. commit check
- C. commit comment
- D. commit and-quit

Show Suggested Answer





Actual exam question from Juniper's JN0-103

Question #: 2

Topic #: 1

[\[All JN0-103 Questions\]](#)

---

By default, which character indicates the UNIX shell prompt?

- A. #
- B. %
- C. \$
- D. >

Show Suggested Answer





Actual exam question from Juniper's JN0-103

Question #: 3

Topic #: 1

[\[All JN0-103 Questions\]](#)

---

You are considering an upgrade from 19.1R1 and want to ensure that only bug fixes are included.

Which two software versions should you consider in this situation? (Choose two.)

- A. 19.3R1-S1
- B. 19.3R2
- C. 19.1R3
- D. 19.1R1-S2

Show Suggested Answer





Actual exam question from Juniper's JN0-103

Question #: 4

Topic #: 1

[\[All JN0-103 Questions\]](#)

---

Which two statements are true about static routes in the Junos OS? (Choose two.)

- A. Static routes remain in the routing table until you remove them or until they become inactive.
- B. Static routes must have a next hop defined.
- C. Static routes are learned by neighboring devices and added to their routing tables.
- D. Static routes are defined at the [edit routing-instances] hierarchy.

Show Suggested Answer





Actual exam question from Juniper's JN0-103

Question #: 5

Topic #: 1

[\[All JN0-103 Questions\]](#)

---

When multiple users are editing the configuration on a Junos device, what is the default behavior when a user issues a commit command?

- A. All valid configuration changes made by all users will take effect.
- B. The user's configuration changes are committed; other users' configuration changes are still pending.
- C. The user will receive an error message disallowing a commit of the configuration.
- D. The user's configuration changes are committed; other users will be exited from configuration mode.

Show Suggested Answer





Actual exam question from Juniper's JN0-103

Question #: 6

Topic #: 1

[\[All JN0-103 Questions\]](#)

---

Routing policies contain which two types of statements? (Choose two.)

- A. then
- B. from
- C. default
- D. and

Show Suggested Answer



Actual exam question from Juniper's JN0-103

Question #: 7

Topic #: 1

[\[All JN0-103 Questions\]](#)

---

You are connected to your Junos device using an SSH connection to the fxp0 interface. No other interfaces are currently configured beyond their default settings.

You commit a configuration that makes the fxp0 interface unreachable from your management network.

In this scenario, how would you re-establish communication with the device?

- A. Connect to the console of the device.
- B. Establish an SSH connection to the loopback interface.
- C. Power off and power on the device.
- D. Unplug the network cable and plug it back in.

Show Suggested Answer



Actual exam question from Juniper's JN0-103

Question #: 8

Topic #: 1

[\[All JN0-103 Questions\]](#)

### Specific System Log Message Information

Name	CHASSISD_TERM_SIGNAL
Message	Received SIGTERM request, shutting down
Help	chassisd received termination signal
Desc	The chassis process (chassisd) received the SIGTERM signal, indicating that it should terminate. It began the procedure for clean shutdown and exit, but possibly restarted automatically after existing.
Type	Event: This message reports an event, not an error
Sev	Info
Facility	LOG_DAEMON
Platforms Supported	<a href="#">Common Junos</a>

Referring to the exhibit, which command will cause this event message?

- A. request system halt
- B. request system logout
- C. request system recover
- D. request system commit

Show Suggested Answer





Actual exam question from Juniper's JN0-103

Question #: 9

Topic #: 1

[\[All JN0-103 Questions\]](#)

---

What are two benefits realized by the disaggregated Junos OS? (Choose two.)

- A. There is increased flexibility to use different control plane versions.
- B. The Junos VM becomes hardware-independent and can be deployed on any hypervisor without modification.
- C. The architecture facilitates programmability through provisioning the control plane, the data path, and the platform APIs.
- D. The platform drivers and forwarding engine are removed from the control plane to increase performance.

Show Suggested Answer





Actual exam question from Juniper's JN0-103

Question #: 10

Topic #: 1

[\[All JN0-103 Questions\]](#)

---

Which two features are implemented on the Packet Forwarding Engine? (Choose two.)

- A. firewall filters
- B. chassis management
- C. class of service
- D. routing protocol updates

Show Suggested Answer





Actual exam question from Juniper's JN0-103

Question #: 11

Topic #: 1

[\[All JN0-103 Questions\]](#)

---

```
user@router> monitor traffic interface et-0/0/1.0 matching arp count 10
```

Referring to the exhibit, which parameter at the end of the command would provide information for troubleshooting purposes?

- A. no-timestamp
- B. extensive
- C. print-ascii
- D. no-resolve

Show Suggested Answer





Actual exam question from Juniper's JN0-103

Question #: 12

Topic #: 1

[\[All JN0-103 Questions\]](#)

---

Which parameter of the monitor traffic command should be used with caution when considering storage space on a Junos device?

- A. write-file
- B. layer2-headers
- C. extensive
- D. detail

Show Suggested Answer





Actual exam question from Juniper's JN0-103

Question #: 13

Topic #: 1

[\[All JN0-103 Questions\]](#)

---

Which two commands would you use to reset the candidate configuration to the active configuration? (Choose two.)

- A. rollback 0
- B. rollback 2
- C. rollback 1
- D. rollback

Show Suggested Answer





Actual exam question from Juniper's JN0-103

Question #: 14

Topic #: 1

[\[All JN0-103 Questions\]](#)

---

Which two statements are true regarding dynamic routing? (Choose two.)

- A. Participating devices dynamically learn routing information from each other.
- B. Dynamic routing requires more administrative overhead than static routing.
- C. Dynamic routing allows a device to automatically reroute traffic around a failure.
- D. Dynamic routing is used when absolute control of routing parameters is necessary.

Show Suggested Answer

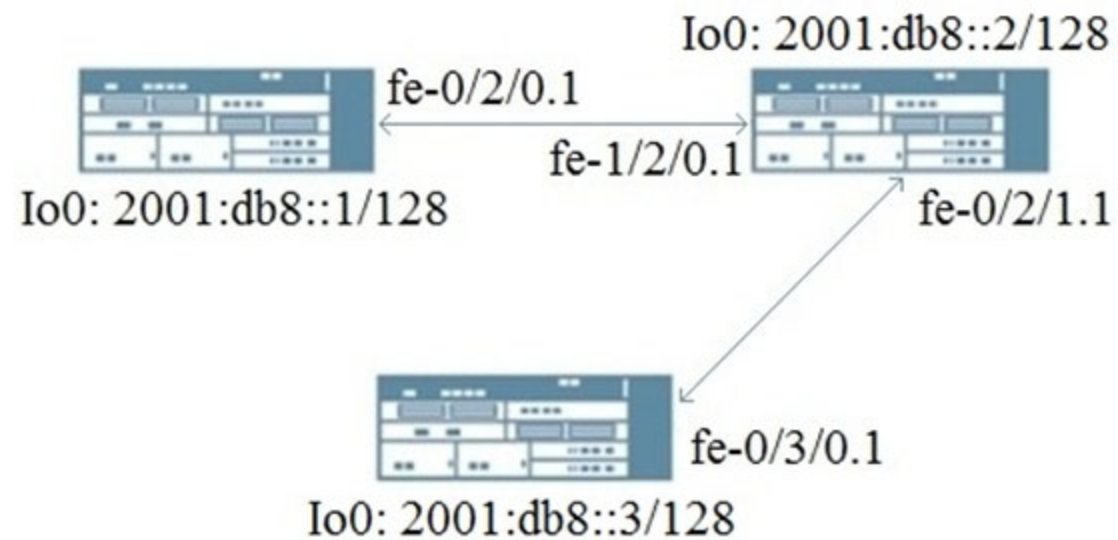


Actual exam question from Juniper's JN0-103

Question #: 15

Topic #: 1

[\[All JN0-103 Questions\]](#)



Referring to the exhibit, which dynamic routing protocol would be used for this topology?

- A. IGMPv3
- B. RIPng
- C. RIP
- D. OSPFv2

Show Suggested Answer

Actual exam question from Juniper's JN0-103

Question #: 16

Topic #: 1

[\[All JN0-103 Questions\]](#)

```

user@router> show route forwarding-table
Routing table: default.inet
Internet:
Enabled protocols: Bridging,
Destination      Type  RtRef  Next hop      Type  Index  NhRef  Netif
default          perm   0      rjct          36    1
0.0.0.0/32       perm   0      dscd          34    1
10.5.0.0/16      user   0      10.102.70.254 ucst   355   18  fxp0.0
10.10.0.0/16     user   0      10.102.70.254 ucst   355   18  fxp0.0
10.12.14.0/24    intf   0      rslv          589   1   ge-2/0/0.0
10.12.14.0/32    dest   0      10.12.14.0    recv   587   1   ge-2/0/0.0
10.12.14.254/32  intf   0      10.12.14.254 locl   588   2
10.12.14.254/32  dest   0      10.12.14.254 locl   588   2
10.12.14.255/32  dest   0      10.12.14.255 bcst   586   1   ge-2/0/0.0
10.13.10.0/23    user   0      10.102.70.254 ucst   355   18  fxp0.0
10.84.0.0/16     user   0      10.102.70.254 ucst   355   18  fxp0.0
10.102.70.0/24   intf   0      rslv          354   1   fxp0.0
224.0.0.0/4      perm   0      mdsc          35    1
224.0.0.1/32     perm   0      224.0.0.1     mcst   31    2
224.0.0.5/32     user   0      224.0.0.5     mcst   31    2
255.255.255.255/32 perm   0      bcst          32    1

```

Referring to the exhibit, what happens to a packet that has a destination address of 172.17.0.1?

- A. The packet is forwarded to the next hop of the management network.
- B. The packet is rejected and an ICMP network unreachable message is sent to the source address.
- C. The packet is silently discarded.
- D. The packet is forwarded to the next hop defined in the default route.

Show Suggested Answer





Actual exam question from Juniper's JN0-103

Question #: 17

Topic #: 1

[\[All JN0-103 Questions\]](#)

---

You notice that the terms in your firewall filter are not in the correct order.

What would solve this problem?

- A. Use the next term action to force an evaluation of the next term.
- B. Use the insert command to reorder the terms within the filter.
- C. Use the count parameter to ensure that the terms are evaluated correctly.
- D. Use the reject action to change the action of the filter.

Show Suggested Answer





Actual exam question from Juniper's JN0-103

Question #: 18

Topic #: 1

[\[All JN0-103 Questions\]](#)

---

Which command will show files stored in the `/var/home/lab` directory?

- A. `lab@router> file show`
- B. `lab@router> file list`
- C. `[edit] lab@router# rollback ?`
- D. `lab@router> ls`

Show Suggested Answer





Actual exam question from Juniper's JN0-103

Question #: 19

Topic #: 1

[\[All JN0-103 Questions\]](#)

---

Which two statements are true about the default behavior of Junos routing policies? (Choose two.)

- A. Routing policies control the flow of routing information going to and from the forwarding table.
- B. Routing policies control the flow of routing information going to and from the routing table.
- C. Routing policies can export active and inactive routes.
- D. Routing policies can export only active routes.

Show Suggested Answer





Actual exam question from Juniper's JN0-103

Question #: 20

Topic #: 1

[\[All JN0-103 Questions\]](#)

---

How does the PFE determine how to forward transit traffic?

- A. The PFE determines network destinations itself based on the RE's routing table.
- B. The PFE uses the forwarding table provided by the RE.
- C. The PFE performs a destination lookup based on its own routing table.
- D. The PFE uses the routing table provided by the RE.

Show Suggested Answer



Actual exam question from Juniper's JN0-103

Question #: 21

Topic #: 1

[\[All JN0-103 Questions\]](#)

```
user@router> show route protocol static

inet.0: 7 destinations, 8 routes (7 active, 0 holddown, 0 hidden)
+ = Active Route, - = Last Active, * = Both

192.168.47.0/24    *[Static/5] 02:02:03
                  > to 172.16.1.2 via ge-1/2/0.0
                  [Static/25] 01:58:21
                  > to 192.168.2.2 via fe-1/2/1.2
```

Referring to the exhibit, what information is provided about the route to 192.168.47.0/24? (Choose two.)

- A. There are two active routes to 192.168.47.0/24.
- B. There is a single active route to 192.168.47.0/24.
- C. There are two next hops available to 192.168.47.0/24.
- D. There is a single next hop available to 192.168.47.0/24.

Show Suggested Answer



Actual exam question from Juniper's JN0-103

Question #: 22

Topic #: 1

[\[All JN0-103 Questions\]](#)

---

Depending on the device type, Junos is built upon which two OS kernels? (Choose two.)

- A. NetBSD
- B. FreeBSD
- C. Linux
- D. OpenBSD

[Show Suggested Answer](#)





Actual exam question from Juniper's JN0-103

Question #: 23

Topic #: 1

[\[All JN0-103 Questions\]](#)

---

Which two statements describe PFE functions? (Choose two.)

- A. The PFE stores a local copy of the Layer 2 and Layer 3 forwarding tables.
- B. The PFE provides access to the CLI and J-Web.
- C. The PFE stores the master copy of the Layer 2 and Layer 3 forwarding tables.
- D. The PFE implements rate limiting using policers.

Show Suggested Answer





Actual exam question from Juniper's JN0-103

Question #: 24

Topic #: 1

[\[All JN0-103 Questions\]](#)

```
user@router> show interfaces terse | match ge-
ge-0/0/0          up      up
ge-0/0/1          up      up
ge-0/0/1.0        up      up      inet      172.26.133.105/24
ge-0/0/2          up      up
ge-0/0/2.0        down    up      inet      172.40.1.2/24
```

Referring to the exhibit, which logical interface is able to forward IP traffic?

- A. ge-0/0/2.0
- B. ge-0/0/0
- C. ge-0/0/1.0
- D. ge-0/0/2

Show Suggested Answer







Actual exam question from Juniper's JN0-103

Question #: 25

Topic #: 1

[\[All JN0-103 Questions\]](#)

---

In your configuration, an interface contains multiple IP addresses belonging to the same subnet. You want to identify the IP address to use for packets sent to hosts on the same subnet.

Which parameter would you use to accomplish this task?

- A. patch
- B. primary
- C. preferred
- D. relative

Show Suggested Answer





Actual exam question from Juniper's JN0-103

Question #: 26

Topic #: 1

[\[All JN0-103 Questions\]](#)

---

What are two modes of unicast reverse path forwarding? (Choose two.)

- A. strict
- B. high
- C. low
- D. loose

Show Suggested Answer





Actual exam question from Juniper's JN0-103

Question #: 27

Topic #: 1

[\[All JN0-103 Questions\]](#)

---

You successfully established a BGP session with a peer, but do not see any routes learned from the peer.  
What would cause this problem?

- A. A routing policy is blocking BGP from learning the routes.
- B. A security policy is blocking BGP from learning the routes.
- C. Unicast reverse-path-forwarding is blocking BGP from learning the routes.
- D. The firewall filter is blocking BGP from learning the routes.

Show Suggested Answer





Actual exam question from Juniper's JN0-103

Question #: 28

Topic #: 1

[\[All JN0-103 Questions\]](#)

---

What are two services performed by the Packet Forwarding Engine? (Choose two.)

- A. to process transit traffic
- B. to handle processes that control the device's interfaces
- C. to maintain the routing tables
- D. to implement stateless firewall filtering

Show Suggested Answer





Actual exam question from Juniper's JN0-103

Question #: 29

Topic #: 1

[\[All JN0-103 Questions\]](#)

---

Which command displays all IPv4 routes in the default routing instance?

- A. show route table inet.1
- B. show route table inet6.0
- C. show route table inet.2
- D. show route table inet.0

Show Suggested Answer





Actual exam question from Juniper's JN0-103

Question #: 30

Topic #: 1

[\[All JN0-103 Questions\]](#)

---

Which statement is true about the orlonger route-filter match type?

- A. All routes within the specified prefix that are longer than or equal to the given prefix are considered a match.
- B. All routes within the specified prefix that are longer or equal to the given prefix up to a defined acceptable prefix length are considered a match.
- C. All routes within the specified prefix that are longer than the given prefix up to a defined acceptable prefix length are considered a match.
- D. All routes within the specified prefix that are longer than the given prefix are considered a match.

Show Suggested Answer





Actual exam question from Juniper's JN0-103

Question #: 31

Topic #: 1

[\[All JN0-103 Questions\]](#)

---

What are two configurable physical interface properties? (Choose two.)

- A. protocol family
- B. address
- C. MTU
- D. link mode

Show Suggested Answer





Actual exam question from Juniper's JN0-103

Question #: 32

Topic #: 1

[\[All JN0-103 Questions\]](#)

---

What is the maximum number of configurations, by default, that are recoverable using the rollback command?

- A. 50
- B. 25
- C. 100
- D. 75

Show Suggested Answer







Actual exam question from Juniper's JN0-103

Question #: 33

Topic #: 1

[\[All JN0-103 Questions\]](#)

---

What is the purpose of the load merge command?

- A. to look for a replace tag in the configuration you load
- B. to combine the current configuration with the configuration you load
- C. to add or delete variables from the configuration based on the contents of a specified patch file
- D. to completely overwrite the current configuration with the configuration you load

Show Suggested Answer





Actual exam question from Juniper's JN0-103

Question #: 34

Topic #: 1

[\[All JN0-103 Questions\]](#)

---

What is the purpose of the discard action of a firewall filter?

- A. The system silently drops the packet.
- B. The system evaluates the next term in the policy.
- C. The system drops the packet and logs the entry.
- D. The system drops the packet and sends an ICMP message.

Show Suggested Answer





Actual exam question from Juniper's JN0-103

Question #: 35

Topic #: 1

[\[All JN0-103 Questions\]](#)

---

Which keystroke combination allows users to move the cursor to the end of the command line without deleting text?

- A. Ctrl + a
- B. Ctrl + e
- C. Ctrl + w
- D. Ctrl + u

Show Suggested Answer





Actual exam question from Juniper's JN0-103

Question #: 36

Topic #: 1

[\[All JN0-103 Questions\]](#)

---

Which two statements describe IPv4 default behavior for BGP? (Choose two.)

- A. All active BGP routes are exported to configured EBGP neighbors.
- B. All BGP routes are exported to configured EBGP neighbors.
- C. All BGP routes are imported into the inet4.0 routing table.
- D. All BGP routes are imported into the inet.0 routing table.

Show Suggested Answer



Actual exam question from Juniper's JN0-103

Question #: 37

Topic #: 1

[\[All JN0-103 Questions\]](#)

---

```
[edit system ntp]
user@router# show
server 172.25.11.254;
```

Referring to the exhibit, which action would synchronize the local router's clock with the NTP server?

- A. Issue the set date ntp operational command.
- B. Configure the correct NTP trusted key using the set trusted-key <key-value> configuration command under the [edit system ntp] hierarchy.
- C. Configure the NTP server using the set boot-server 172.25.11.254 configuration command under the [edit system ntp] hierarchy.
- D. Reboot the router.

Show Suggested Answer





Actual exam question from Juniper's JN0-103

Question #: 38

Topic #: 1

[\[All JN0-103 Questions\]](#)

---

You have configured an SRX Series device for the first time. When you commit your configuration, the Junos OS notifies you that you cannot yet commit your configuration.

Which configuration step must you complete?

- A. date/time
- B. root authentication
- C. security policies
- D. hostname

Show Suggested Answer





Actual exam question from Juniper's JN0-103

Question #: 39

Topic #: 1

[\[All JN0-103 Questions\]](#)

---

Which two interfaces are considered physical interfaces? (Choose two.)

- A. ge-0/0/0
- B. et-7/1/4.0
- C. et-3/0/0:0.501
- D. xe-10/2/1

Show Suggested Answer





Actual exam question from Juniper's JN0-103

Question #: 40

Topic #: 1

[\[All JN0-103 Questions\]](#)

---

Which configuration parameter on a Junos device modifies the default next-hop resolution behavior of a static route?

- A. resolve
- B. no-readvertise
- C. passive
- D. preference

Show Suggested Answer





Actual exam question from Juniper's JN0-103

Question #: 41

Topic #: 1

[\[All JN0-103 Questions\]](#)

```
user@router> show chassis routing-engine
Routing Engine status:
  Temperature                0 degrees C / 32 degrees F
  CPU temperature             0 degrees C / 32 degrees F
  Total memory                931 MB Max 270 MB used ( 29 percent)
  Memory utilization          28 percent
  5 sec CPU utilization:
    User                      1 percent
    Background                0 percent
    Kernel                    1 percent
    Interrupt                 0 percent
    Idle                      98 percent
  1 min CPU utilization:
    User                      0 percent
    Background                0 percent
    Kernel                    1 percent
    Interrupt                 0 percent
    Idle                      99 percent
  5 min CPU utilization:
    User                      0 percent
    Background                0 percent
    Kernel                    1 percent
    Interrupt                 0 percent
    Idle                      99 percent
  15 min CPU utilization:
    User                      0 percent
    Background                0 percent
    Kernel                    1 percent
    Interrupt                 0 percent
    Idle                      99 percent
  Model                      VSRX-S
  Serial ID                   BUILTIN
  Start time                  2020-01-16 15:21:32 UTC
  Uptime                      12 days, 4 hours, 33 minutes, 7 seconds
  Last reboot reason          0x4000:VJUNOS reboot
  Load averages:              1 minute    5 minute    15 minute
                              0.74         0.37         0.29
```

Referring to the exhibit, which two statements are correct? (Choose two.)

- A. The memory utilization is 28%.
- B. The memory utilization is 72%.
- C. The 15 minute CPU load average is 99%.
- D. The CPU kernel utilization is 1%.

Show Suggested Answer



Actual exam question from Juniper's JN0-103

Question #: 42

Topic #: 1

[\[All JN0-103 Questions\]](#)

---

Which two statements describe the connection between the control plane and the forwarding plane? (Choose two.)

- A. Exception traffic is preferred over control traffic during congestion.
- B. A rate limiter is configured by default.
- C. Control traffic is preferred over exception traffic during congestion.
- D. No rate limiter is configured by default.

Show Suggested Answer



Actual exam question from Juniper's JN0-103

Question #: 43

Topic #: 1

[\[All JN0-103 Questions\]](#)

---

When a system process encounters an error, how does the Junos OS protect other processes from being impacted?

- A. Each process operates in its own shared memory space.
- B. The Junos OS executes only one process at a time.
- C. Each routing protocol runs as an individual process.
- D. The Junos OS executes multiple processes simultaneously.

Show Suggested Answer



Actual exam question from Juniper's JN0-103

Question #: 44

Topic #: 1

[\[All JN0-103 Questions\]](#)

```
user@router> show route forwarding-table
routing table: inet
internet:
Destination Type RtRef next hop Type Index NhRef Netif
default user 0 0:32.51.07.89.2 ucst 520 ge-0/0/0.0
default perm 0 rjct 36 1
0.0.0.0/32 perm 0 dscd 34 1
10.21.0.0/16 user 0 192.168.10.100 ucast 535 3 ge-0/0/2.0
10.21.14.0/24 user 0 192.168.11.100 ucast 528 3 ge-0/0/1.0
10.21.14.10/30 user 0 192.168.12.100 ucast 530 3 ge-0/0/3.0
```

Which next-hop interface will be used to reach the 10.21.14.16 destination as shown in the exhibit?

- A. ge-0/0/0.0
- B. ge-0/0/2.0
- C. ge-0/0/1.0
- D. ge-0/0/3.0

Show Suggested Answer

Actual exam question from Juniper's JN0-103

Question #: 45

Topic #: 1

[\[All JN0-103 Questions\]](#)

```
user@router# run show route
inet.0: 8 destinations, 10 routes (8 active, 0 holddown, 0 hidden)
+ = Active Route, - = Last Active, * = Both
0.0.0.0/0      *[BGP/170] 00:00:24, localpref 100
               AS path: 65000 I, validation-state: unverified
               > to 172.18.6.1 via ge-0/0/0.0
               to 172.18.7.1 via ge-0/0/1.0
               [BGP/170] 00:00:24, localpref 100
               AS path: 65000 I, validation-state: unverified
               > to 172.18.7.1 via ge-0/0/1.0
10.210.0.0/16  *[Static/5] 1w0d 20:17:39
               > to 172.25.11.254 via fxp0.0
172.18.6.0/30  *[Direct/0] 00:00:30
               > via ge-0/0/0.0
172.18.6.2/32  *[Local/0] 00:00:30
               Local via ge-0/0/0.0
172.31.16.0/24 *[BGP/170] 00:00:24, localpref 100
               AS path: 65000 I, validation-state: unverified
               > to 172.18.7.1 via ge-0/0/1.0
               [BGP/170] 00:00:28, localpref 100
               AS path: 802 5512 3318 65000 I, validation-state: unverified
               > to 172.18.6.1 via ge-0/0/0.0
192.168.1.1/32 *[OSPF/10] 00:00:25, metric 1
               > to 192.168.11.2 via ge-0/0/4.0
192.168.80.0/28 *[BGP/170] 00:00:24, localpref 100, from 172.18.6.1
               AS path: 65000 I, validation-state: unverified
               to 172.18.6.1 via ge-0/0/0.0
               > to 172.18.7.1 via ge-0/0/1.0
               [BGP/170] 00:00:24, localpref 100
               AS path: 65000 I, validation-state: unverified
               > to 172.18.7.1 via ge-0/0/1.0
224.0.0.5/32  *[OSPF/10] 00:01:11, metric 1
               MultiRecv
```

What is the next hop for a packet destined to 192.168.80.98 as shown in the exhibit?

- A. 172.18.6.1
- B. 172.25.11.254
- C. 172.18.7.1
- D. 192.168.11.2

Show Suggested Answer

Actual exam question from Juniper's JN0-103

Question #: 46

Topic #: 1

[\[All JN0-103 Questions\]](#)

---

```
{master:0}[edit routing-instances]
root@switch# top set interfaces xe-0/0/39.0 family ethernet-switching
```

Which statement is true about the command shown in the exhibit?

- A. There needs to be a ; after top for the command to be accepted as a valid command.
- B. Only top should be used, no other options are allowed on the same line.
- C. The command shown in the exhibit would be accepted as a valid command.
- D. If you replace top with up command, it becomes valid.

Show Suggested Answer



Actual exam question from Juniper's JN0-103

Question #: 47

Topic #: 1

[\[All JN0-103 Questions\]](#)

You configured the route filter shown in the exhibit.

```
{edit policy-options}
user@router# show
policy-statement Policy-One {
  term term-One{
    from {
      route-filter 172.35.0.0/16 orlonger;
    }
    then accept;
  }
}
```

In this scenario, which IP addresses would term-One accept?

- A. IP addresses that are part of the 172.35.0.0/16 network only.
- B. IP addresses that are part of the 172.35.0.0/16 network and IP addresses that are in the 172.35.0.0/16 and 172.36.0.0/16 subnets.
- C. IP addresses that are in a subnet of 172.35.0.0/16 network, but not IP addresses that are part of the 172.35.0.0/16 network itself.
- D. IP addresses that are part of the 172.35.0.0/16 network and IP addresses that are in subnets of 172.35.0.0/16 network.

Show Suggested Answer



Actual exam question from Juniper's JN0-103

Question #: 48

Topic #: 1

[\[All JN0-103 Questions\]](#)

---

You are troubleshooting an issue and want to monitor syslog in real time.

Which operational command accomplishes this task?

- A. show log messages
- B. monitor start messages
- C. monitor traffic interface fxp0.0
- D. show log messages | refresh 1

[Show Suggested Answer](#)







Actual exam question from Juniper's JN0-103

Question #: 49

Topic #: 1

[\[All JN0-103 Questions\]](#)

---

You issue the request system zeroize command.

Which statement is correct in this scenario?

- A. All data files are deleted and all configuration settings are returned to factory defaults.
- B. All data files remain unchanged but all configuration settings are returned to factory defaults.
- C. Disk space is freed by rotating log files and a proposed list of files to delete is presented.
- D. All data files are deleted and the configuration settings remain unchanged.

Show Suggested Answer



Actual exam question from Juniper's JN0-103

Question #: 50

Topic #: 1

[\[All JN0-103 Questions\]](#)

---

Item	Version	Part number	Serial number	Description
Chassis			EBE7ABF9EA61	VSRX
Midplane	REV 08	750-058562	4229D770	VSRX
Pseudo CB 0				
Routing Engine 0		BUILTIN	BUILTIN	VSRX-S
FPC 0	REV 07	611-049549	RL3714040884	FPC
PIC 0		BUILTIN	BUILTIN	VSRX DPK GE

Referring to the exhibit, which command was issued to generate the output?

- A. show chassis environment
- B. show chassis hardware
- C. show chassis routing-engine
- D. show chassis fpc

Show Suggested Answer





Actual exam question from Juniper's JN0-103

Question #: 51

Topic #: 1

[\[All JN0-103 Questions\]](#)

---

What are two default password requirements on devices running Junos OS? (Choose two.)

- A. Passwords must contain at least one special character.
- B. Alphanumeric character classes must be used.
- C. An expiration date must be set.
- D. Passwords must be at least six characters in length.

Show Suggested Answer





Actual exam question from Juniper's JN0-103

Question #: 52

Topic #: 1

[\[All JN0-103 Questions\]](#)

---

Which parameter would you use to prohibit the redistribution of a static route used for management traffic?

- A. discard
- B. passive
- C. reject
- D. no-readvertise

Show Suggested Answer





Actual exam question from Juniper's JN0-103

Question #: 53

Topic #: 1

[\[All JN0-103 Questions\]](#)

---

Which two keystrokes are used to auto-complete commands? (Choose two.)

- A. Esc
- B. Spacebar
- C. Tab
- D. End

Show Suggested Answer





Actual exam question from Juniper's JN0-103

Question #: 54

Topic #: 1

[\[All JN0-103 Questions\]](#)

---

Which two conditions must exist in a Junos device for traffic to transit the device to a specific destination? (Choose two.)

- A. A routing table entry for that destination must exist.
- B. A firewall filter must exist to allow traffic to reach that destination.
- C. A forwarding table entry for that destination must exist.
- D. A routing policy must be in place on the device.

Show Suggested Answer





Actual exam question from Juniper's JN0-103

Question #: 55

Topic #: 1

[\[All JN0-103 Questions\]](#)

---

You are attempting to upgrade the Junos OS on your device, but there is not enough space to complete the upgrade.

Which parameter, added to the request system software add command, would solve the problem?

- A. validate
- B. force
- C. no-validate
- D. no-copy

[Show Suggested Answer](#)



Actual exam question from Juniper's JN0-103

Question #: 56

Topic #: 1

[\[All JN0-103 Questions\]](#)

```
user@router> show route
```

```
inet.0: 1222 destinations, 1525 routes (1222 active, 0 holddown, 0 hidden)  
+ = Active Route, - = Last Active, * = Both
```

```
0.0.0.0/0          *[Static/5] 1w2d 22:59:01  
                  > to 10.10.10.1 via fxp0.0
```

```
10.10.10.0/25     *[Direct/0] 1w2d 22:59:01  
                  > via fxp0.0  
                  [Direct/0] 1w2d 22:58:57  
                  > via fxp0.0
```

```
10.10.10.7/32     *[Local/0] 1w2d 22:59:01  
                  Local via fxp0.0
```

```
10.10.10.9/32     *[Local/0] 1w2d 22:58:57  
                  Local via fxp0.0
```

```
10.200.200.0/23   *[Direct/0] 1w2d 22:30:24  
                  > via xe-0/0/3.100
```

Referring to the exhibit, what does the number inside the square brackets represent?

- A. route preference
- B. metric
- C. protocol reference number
- D. local preference

Show Suggested Answer





Actual exam question from Juniper's JN0-103

Question #: 57

Topic #: 1

[\[All JN0-103 Questions\]](#)

---

What are three functions of the RE? (Choose three.)

- A. to monitor the chassis
- B. to maintain the forwarding tables
- C. to implement policing
- D. to enforce stateless firewall filters
- E. to manage the PFE

Show Suggested Answer





Actual exam question from Juniper's JN0-103

Question #: 58

Topic #: 1

[\[All JN0-103 Questions\]](#)

---

What information would you find using the CLI help function? (Choose two.)

- A. Junos technical publications
- B. explanation of traceoption events
- C. tip for the day
- D. explanation of specific system log error messages

Show Suggested Answer





Actual exam question from Juniper's JN0-103

Question #: 59

Topic #: 1

[\[All JN0-103 Questions\]](#)

---

What is an `X` release of the Junos OS?

- A. a standard feature release
- B. a feature velocity release
- C. a special feature release
- D. a feature beta release

Show Suggested Answer



Actual exam question from Juniper's JN0-103

Question #: 60

Topic #: 1

[\[All JN0-103 Questions\]](#)

```
user@router> show route
inet.0: 5 destinations, 5 routes (5 active, 0 holddown, 0 hidden)
+ = Active Route, - = Last Active, * = Both
10.210.0.0/16      *[Static/5] 1w0d 20:17:39
                  > to 172.25.11.254 via fxp0.0
172.18.6.0/30     *[Direct/0] 00:00:30
                  > via ge-0/0/0.0
172.31.20.0/24    *[BGP/170] 00:00:24, localpref 100
                  AS path: 65000 I, validation-state: unverified
                  > to 172.18.6.1 via ge-0/0/0.0
                  to 172.18.7.1 via ge-0/0/1.0
                  [BGP/170] 00:00:24, localpref 100
                  AS path: 65000 I, validation-state: unverified
                  > to 172.18.7.1 via ge-0/0/1.0
172.31.17.0/24    *[OSPF/150] 00:00:25, metric 1
                  > to 192.168.11.2 via ge-0/0/4.0
                  [BGP/170] 00:00:24, localpref 100
                  AS path: 65000 I, validation-state: unverified
                  > to 172.18.6.1 via ge-0/0/0.0
                  to 172.18.7.1 via ge-0/0/1.0
                  [BGP/170] 00:00:24, localpref 100
                  AS path: 65000 I, validation-state: unverified
                  > to 172.18.7.1 via ge-0/0/1.0
...
```

You notice traffic destined to 172.31.17.0/24 is traversing an OSPF path rather than a BGP path. Referring to the exhibit, what is causing this behavior?

- A. The 172.31.17.0/24 BGP route has a higher route preference.
- B. The 172.31.17.0/24 route does not have a valid BGP entry.
- C. The 172.31.17.0/24 BGP route is missing a valid default next hop.
- D. The 172.31.17.0/24 BGP route's outgoing interface is down.

Show Suggested Answer



Actual exam question from Juniper's JN0-103

Question #: 61

Topic #: 1

[\[All JN0-103 Questions\]](#)

---

A packet enters a Junos device. No matching destination entry exists in the forwarding table.  
How will the device respond?

- A. The RE responds to the destination with a source unreachable notification message.
- B. The RE responds to the source with a destination unreachable notification message.
- C. The PFE responds to the destination with a source unreachable notification message.
- D. The PFE responds to the source with a destination unreachable notification message.

Show Suggested Answer





Actual exam question from Juniper's JN0-103

Question #: 62

Topic #: 1

[\[All JN0-103 Questions\]](#)

---

Which keystroke is used to auto-complete user-defined variables?

- A. End
- B. Spacebar
- C. Tab
- D. Home

Show Suggested Answer





Actual exam question from Juniper's JN0-103

Question #: 63

Topic #: 1

[\[All JN0-103 Questions\]](#)

---

Which two platforms are supported in both physical and virtual form factors? (Choose two.)

- A. NFX Series
- B. MX Series
- C. SRX Series
- D. ACX Series

Show Suggested Answer



Actual exam question from Juniper's JN0-103

Question #: 64

Topic #: 1

[\[All JN0-103 Questions\]](#)

---

Item	Fan speed	Yellow alarm		Red alarm		Fire Shutdown	
	(degrees C)	(degrees C)		(degrees C)		(degrees C)	
	Normal	High	Normal	Bad fan	Normal	Bad fan	
Chassis default	48	54	65	55	75	65	
Routing Engine 0	55	80	95	95	105	100	

Which command displays the output shown in the exhibit?

- A. show chassis hardware
- B. show chassis temperature-thresholds
- C. show chassis alarms
- D. show chassis environment

Show Suggested Answer