



- Expert Verified, Online, **Free**.



CERTIFICATION TEST

- CertificationTest.net - Cheap & Quality Resources With Best Support

Refer to the exhibit.

← Volume VMWareDS-GF.0

Normal

Health

Status ● Normal

General

Application set	VMwareDatastores-GF
Storage tier	SSD 150 K (CPG: SSD_r6)
Snapshot tier	SSD 150 K (CPG: SSD_r6)
WWN	60002AC0000000000000000620007EA8D

Capacity

Virtual size	20.00 GiB
Used	0%
Host written	0%
Space warning	—
Space limit	—

Efficiency

Data reduction	On
Compaction ratio	—

Copies

6 copies exist for this volume

Host Set Exports

1 host set export exists for this volume

Host Exports

0 host exports exist for this volume

You are configuring a new HPE array and verifying properties of a set of volumes.

Which RAID level is used on the VMwareDatastores-GF volume?

- A. RAID 0
- B. RAID 6
- C. Triple Parity+
- D. RAID 5

Suggested Answer: B

Community vote distribution

B (100%)

None

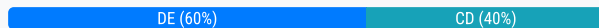
You have proposed that a customer replace their legacy SAN switches with new B-Series switches. They are concerned about the management of all the devices, so you have included SANnav in the proposal.

What are the benefits of SANnav that you should emphasize to this customer? (Choose two.)

- A. It runs in a dedicated JVM
- B. It offers automated SPOCK validation
- C. It runs in a browser
- D. It provides a global View
- E. It provides fine-grain visibility into Storage Fabrics (FC + Ethernet)

Suggested Answer: *DE*

Community vote distribution



None

A customer has completely virtualized their datacenter with VMware. You propose a SimpliVity solution to replace their aging hardware. Which SimpliVity features should you emphasize in your presentation? (Choose two.)

- A. It uses native hypervisor management tools for management
- B. It utilizes the Storage Management Utility for management and monitoring
- C. It utilizes a unified ASIC for performance
- D. It includes deduplication and backup capabilities
- E. It provides S3 file access

Suggested Answer: A

Community vote distribution



None

You want to deploy Recovery Manager Central to a customer environment.
How can you accomplish this? (Choose two.)

- A. Install RMC on top of the virtual or physical RHEL system using the GUI wizard
- B. Deploy an RMC virtual appliance to Microsoft Hyper-V hypervisor
- C. Deploy RMC on top of the virtual CentOS system using the CLI
- D. Deploy RMC on top of the virtual CentOS system using the GUI wizard
- E. Install RMC on the top of the virtual or physical RHEL system using the CLI
- F. Deploy an RMC virtual appliance to VMware ESXi hypervisor

Suggested Answer: *BF*

Community vote distribution

BF (100%)

None

A customer uses Veeam to backup their entire datacenter.

Which Veeam feature allows them to recover a single email from their Exchange server?

- A. Changed block tracking
- B. Explorer for Storage Snapshots
- C. Data Mover Service
- D. SureBackup

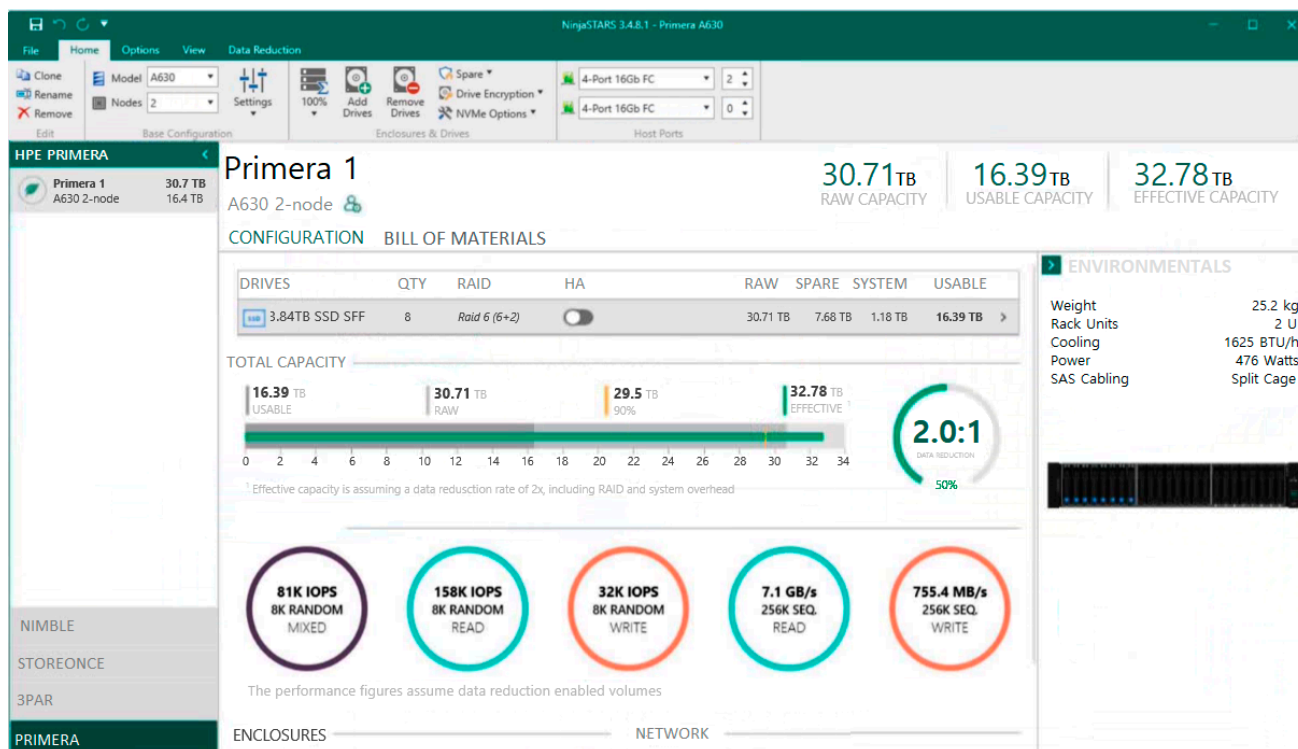
Suggested Answer: B

Community vote distribution



None

Refer to the exhibit.



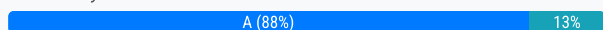
You are designing a new Primera solution and demonstrating performance numbers to the customer. The customer reviews the configuration and requests a change to the configuration that will increase Random Write IOPS.

Which action will satisfy the customer request?

- A. Add more disks of smaller capacity
- B. Upgrade the HPE Primera base model
- C. Change to larger SSDs
- D. Add more FC Ports

Suggested Answer: A

Community vote distribution



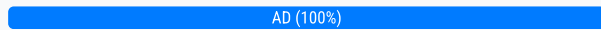
None


Which of the following are part of the SimpliVity Data Virtualization Platform architecture? (Choose two.)

- A. Presentation Layer
- B. User Management Layer
- C. Security Layer
- D. Data Management Layer

Suggested Answer: AD

Community vote distribution



 **yaboiii** 2 months, 1 week ago

Selected Answer: AD

The HPE SimpliVity DVP (Data Virtualization Platform) architecture is broken up into two parts: the Presentation layer and the Data Management layer
upvoted 1 times

A customer is implementing a new high performance database environment.
What type of storage should you recommend?

- A. scale-out storage
- B. object store
- C. system-defined storage
- D. network-attached storage

Suggested Answer: A

Community vote distribution



None

You are designing a new enterprise array solution. The customer is interested in a caching tier that provides extremely low-latency and persistent storage at the same time. They also need to support more than 500GB.

Which technology should you recommend?

- A. DRAM
- B. SRAM
- C. NVMe SCM
- D. NAND SSD

Suggested Answer: *D*

Community vote distribution



None

A customer is implementing an SAP HANA environment and is looking for an alternative to an entirely in-memory database. Which storage technology should you recommend?

- A. SAS SSD
- B. NVMe SSD
- C. NVMe SCM
- D. Intel Optane

Suggested Answer: D

Community vote distribution



None

HOTSPOT -

You need to create an N:M relationship between VMware hypervisors and virtual volumes with the least amount of administrative overhead. Click the option where you can create a group of VMware hypervisors for volumes provisioning.

The screenshot shows the Primera & 3PAR SSMC interface. The 'Block Persona' tab is selected, and the 'Virtual Volumes' link is highlighted in green. The 'Hosts' section is expanded, showing a list of virtual volumes. The 'Common Provisioning Groups' section is also visible, showing a list of groups. The 'Virtual Machines' section is also visible, showing a list of virtual machines.

Virtual Volume	Host	Compaction Type	Provisioning	Dedup	Compression	Mode	RAID	Adaptive optimization	CPG	Copy CPG	Comments	Virtual Machines	App Volume Set
HDP_datastore	SDP1	9.4:1	Base	Thin	Yes	Yes	Read/Write	RAID 6	-	SSD_r6	-	0	-
HDP_datastore.r	SDP2-Alex-Gonzalez	9.4:1	Base	Thin	Yes	Yes	Read/Write	RAID 6	-	SSD_r6	-	0	-
ME-Demo-AutoCPG	SDP1	9.4:1	Base	Thin	Yes	Yes	Read/Write	RAID 6	-	SSD_r6	-	0	-
ME-Demo-AutoCPG.r	SDP2-Alex-Gonzalez	9.4:1	Base	Thin	Yes	Yes	Read/Write	RAID 6	-	SSD_r6	-	0	-
ME-Demo.0	SDP1	9.4:1	Base	Thin	Yes	Yes	Read/Write	RAID 6	-	SSD_r6	-	0	-
ME-Demo.1	SDP1	9.4:1	Base	Thin	Yes	Yes	Read/Write	RAID 6	-	SSD_r6	-	0	-
test.1	SDP1	9.4:1	Base	Thin	Yes	Yes	Read/Write	RAID 6	-	SSD_r6	-	0	-
test.2	SDP1	9.4:1	Base	Thin	Yes	Yes	Read/Write	RAID 6	-	SSD_r6	-	0	-
test.3	SDP1	9.4:1	Base	Thin	Yes	Yes	Read/Write	RAID 6	-	SSD_r6	-	0	-
test_IFM	SDP1	9.4:1	Base	Thin	Yes	Yes	Read/Write	RAID 6	-	SSD_r6	-	0	-
test_IFM_clone	SDP1	9.4:1	Base	Thin	Yes	Yes	Read/Write	RAID 6	-	SSD_r6	-	0	-
test_k	SDP1	9.4:1	Base	Thin	Yes	Yes	Read/Write	RAID 6	-	SSD_r6	-	0	-

Suggested Answer:

The screenshot shows the Primera & 3PAR SSMC interface. The 'Block Persona' tab is selected, and the 'Virtual Volumes' link is highlighted in green. The 'Hosts' section is expanded, showing a list of virtual volumes. The 'Common Provisioning Groups' link is highlighted with a red arrow, indicating the correct option for creating a group of VMware hypervisors for volumes provisioning.

None

Which tool is used to determine current compaction ratios on Primera arrays?

- A. WebUI
- B. Storage Management Utility (SMU)
- C. NinjaStars
- D. SSMC System Reporter

Suggested Answer: *D*

Community vote distribution



None

A customer wants to make a full copy replica of a database to use for performance testing.
Which technology should they use to create the copy?

- A. deduplication
- B. snapshot
- C. clone
- D. synthetic full

Suggested Answer: C

Community vote distribution



None

A customer implemented the HPE StoreEver MSL6480 Tape Library.

Which HPE Software can the system administrator use to check the health of the library and monitor its utilization?

- A. OneView
- B. StoreServe TapeAssure Advanced
- C. StoreEver Data Verification
- D. InfoSight

Suggested Answer: B

Community vote distribution



None

A customer environment includes:

- 10 DL380 Gen8 servers in a VMware Cluster
- 2 MSA storage arrays
- 2 8GB b-series fibre channel switches

The customer needs to replace their environment because it is end of life. They have limited budget. The customer is primarily concerned with management because they have limited IT staff, and they want to move away from fibre channel.

Which HPE Storage should you recommend?

- A. HPE Primera
- B. HPE XP8
- C. HPE Nimble dHCI
- D. HPE StoreOnce

Suggested Answer: A

None

You are designing an HPE MSA iSCSI for a customer.

Which components are typically part of the solution? (Choose two.)

- A. Drives
- B. SFPs
- C. Service Processor
- D. All-inclusive Multi-system software
- E. Switch zones

Suggested Answer: *AB*

None

A customer is planning to upgrade their HF40 controllers to support additional I/O requirements.
To which model can they upgrade to meet their new requirements?

- A. AF60
- B. AF40
- C. HF60
- D. HF40C

Suggested Answer: *C*

Community vote distribution

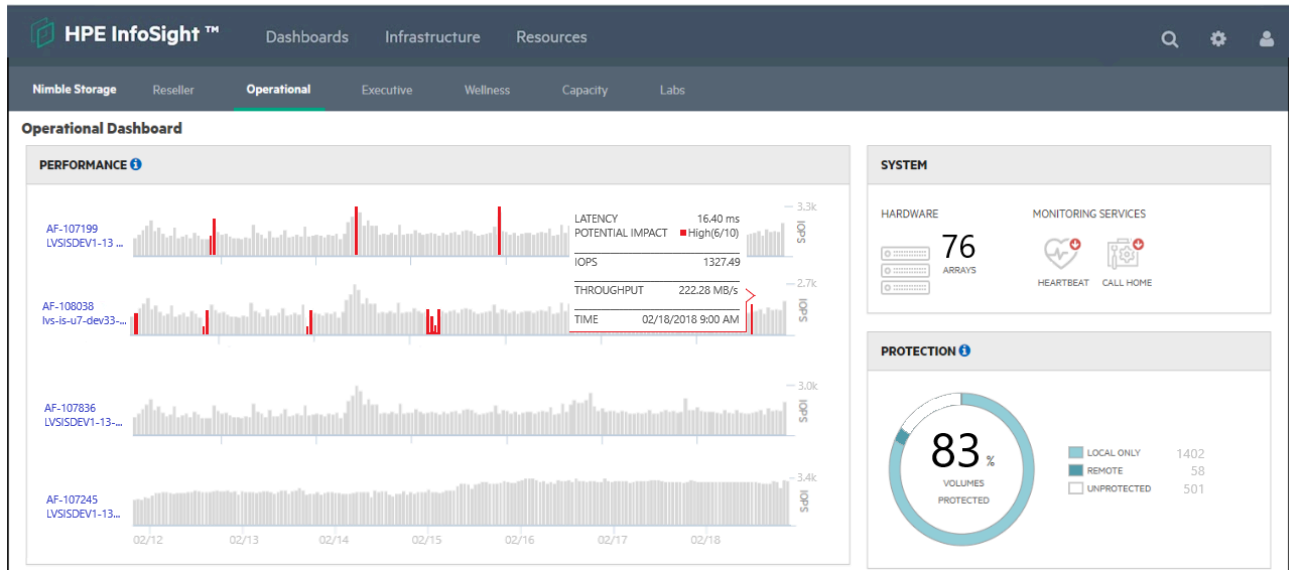
C (100%)

None

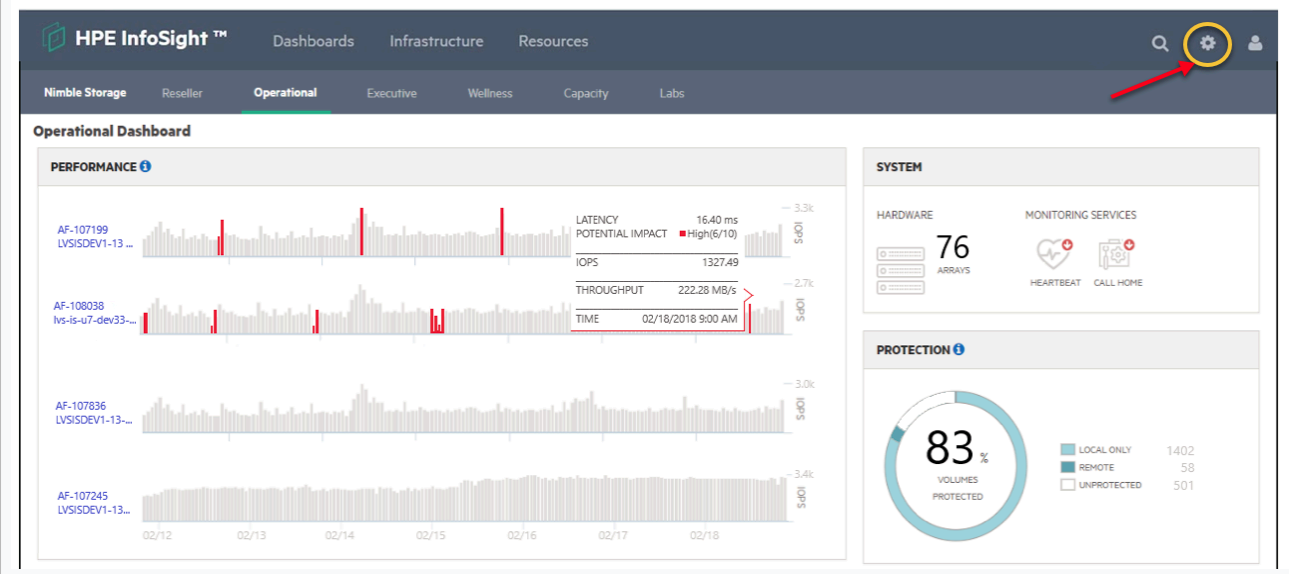
HOTSPOT -

A customer has a Nimble HF40 and needs to create a support ticket.

Click the option in the InfoSight portal where the customer can perform this task.



Suggested Answer:



None

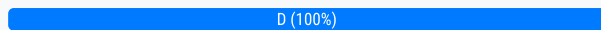
A customer is planning to replace their existing LTO-6 tape library with a new HPE StoreEver MSL2024 tape library. They want to reuse their existing LTO-6 tape cartridges for reads and writes.

What is the latest tape drive technology that will provide backward compatibility?

- A. LT08
- B. LT05
- C. LT06
- D. LT07

Suggested Answer: *D*

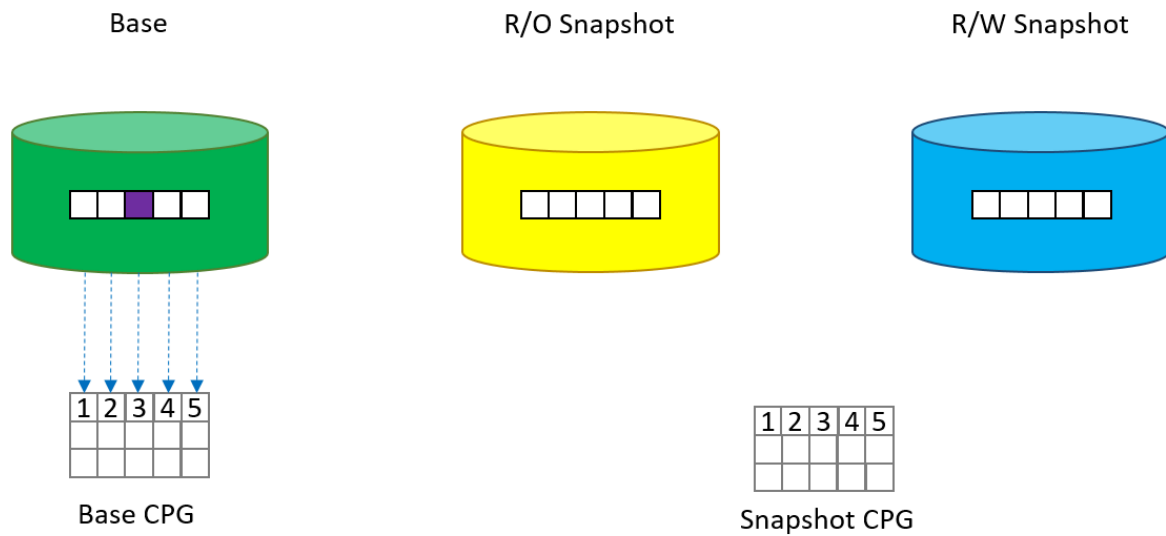
Community vote distribution



None

DRAG DROP -

Refer to the exhibit.



You create two snapshots of a thin provisioned base volume in an HPE Primera. One snapshot is read only and the other is read-write. A write occurs at the location shown in in the diagram.

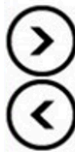
Place the actions on the left into the order they are taken on the right.

Action

Copy block to snapshot CPG

Redirect the snapshots

Update the block with new data

Order**Suggested Answer:****Action**

Copy block to snapshot CPG

Redirect the snapshots

Update the block with new data

**Order**

Redirect the snapshots

Copy block to snapshot CPG

Update the block with new data

None

A customer asks you for a recommendation on setting up their new StoreOnce appliance. They plan to use NetBackup and need the highest performance setup they can get. Their local hosts are connected via FC and the rest are connected via a WAN. Which backup target type should you recommend?

- A. VTL
- B. S3
- C. CIFS
- D. Catalyst

Suggested Answer: A

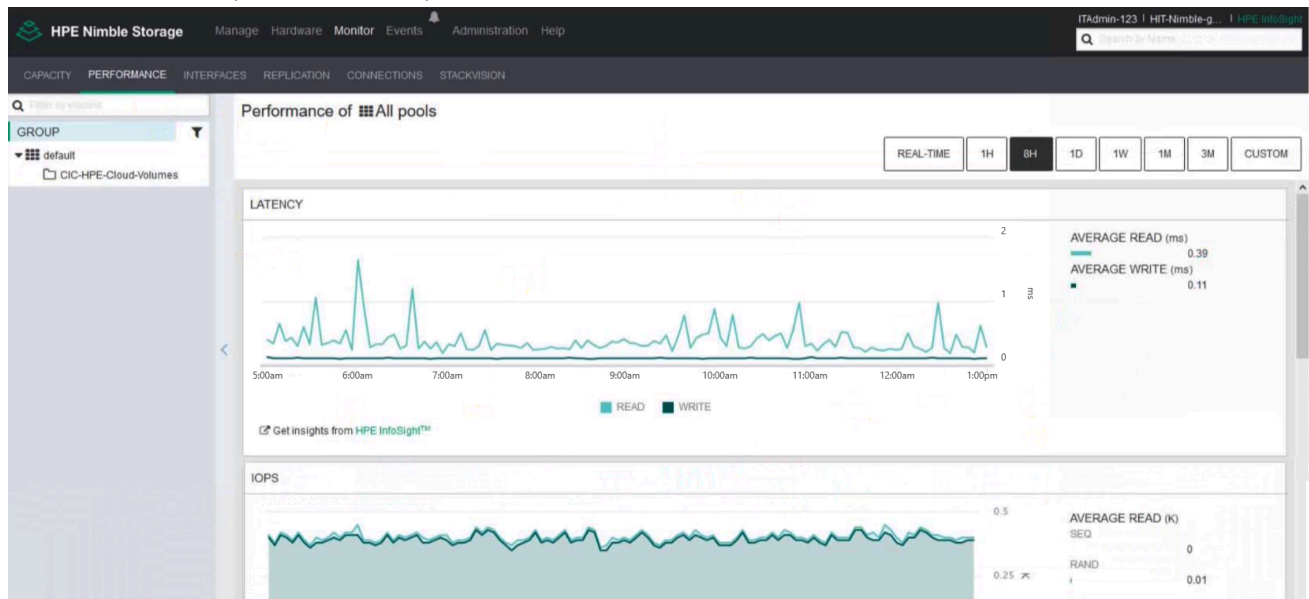
Community vote distribution



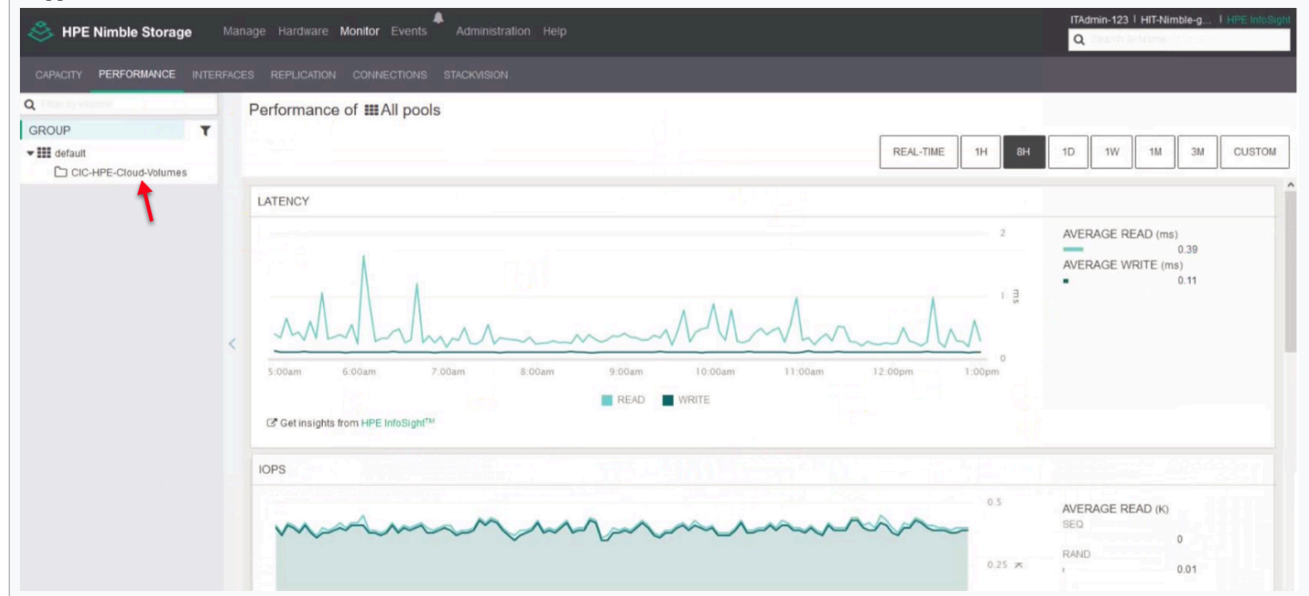
None

HOTSPOT -

You are handing over the installed array to customer. The customer wants to review the amount of HDDs and SSDs in the system.
Click the relevant menu option where the front panel of the head shelf can be visualized.



Suggested Answer:



None

A customer successfully implemented an HPE Primera solution.

Which tool can be used to verify performance counters, such as IOPS, match customer requirements?

- A. NinjaCrawler
- B. OneView
- C. Recovery Manager Central
- D. Primera on-node management GUI

Suggested Answer: *D*

None