



Actual exam question from Microsoft's AI-900

Question #: 1

Topic #: 1

[\[All AI-900 Questions\]](#)

---

A company employs a team of customer service agents to provide telephone and email support to customers.

The company develops a webchat bot to provide automated answers to common customer queries.

Which business benefit should the company expect as a result of creating the webchat bot solution?

- A. increased sales
- B. a reduced workload for the customer service agents
- C. improved product reliability

[Show Suggested Answer](#)





Actual exam question from Microsoft's AI-900

Question #: 2

Topic #: 1

[\[All AI-900 Questions\]](#)

---

For a machine learning progress, how should you split data for training and evaluation?

- A. Use features for training and labels for evaluation.
- B. Randomly split the data into rows for training and rows for evaluation.
- C. Use labels for training and features for evaluation.
- D. Randomly split the data into columns for training and columns for evaluation.

Show Suggested Answer



Actual exam question from Microsoft's AI-900

Question #: 3

Topic #: 1

[\[All AI-900 Questions\]](#)

HOTSPOT -

You are developing a model to predict events by using classification.

You have a confusion matrix for the model scored on test data as shown in the following exhibit.

		Actual	
		1	0
Predicted	1	11	5
	0	1033	13951

Use the drop-down menus to select the answer choice that completes each statement based on the information presented in the graphic.

NOTE: Each correct selection is worth one point.

Hot Area:

### Answer Area

There are **[answer choice]** correctly predicted positives.

5
11
1,033
13,951

There are **[answer choice]** false negatives.

5
11
1,033
13,951

Show Suggested Answer

Actual exam question from Microsoft's AI-900

Question #: 4

Topic #: 1

[\[All AI-900 Questions\]](#)

---

You build a machine learning model by using the automated machine learning user interface (UI).

You need to ensure that the model meets the Microsoft transparency principle for responsible AI.

What should you do?

- A. Set Validation type to Auto.
- B. Enable Explain best model.
- C. Set Primary metric to accuracy.
- D. Set Max concurrent iterations to 0.

Show Suggested Answer





Actual exam question from Microsoft's AI-900

Question #: 5

Topic #: 1

[\[All AI-900 Questions\]](#)

HOTSPOT -

For each of the following statements, select Yes if the statement is true. Otherwise, select No.

NOTE: Each correct selection is worth one point.

Hot Area:

### Answer Area

Statements	Yes	No
Forecasting housing prices based on historical data is an example of anomaly detection.	<input type="radio"/>	<input type="radio"/>
Identifying suspicious sign-ins by looking for deviations from usual patterns is an example of anomaly detection.	<input type="radio"/>	<input type="radio"/>
Predicting whether a patient will develop diabetes based on the patient's medical history is an example of anomaly detection.	<input type="radio"/>	<input type="radio"/>

Show Suggested Answer



Actual exam question from Microsoft's AI-900

Question #: 6

Topic #: 1

[\[All AI-900 Questions\]](#)

---

HOTSPOT -

To complete the sentence, select the appropriate option in the answer area.

Hot Area:

**Answer Area**

The handling of unusual or missing values provided to an AI system is a consideration for the Microsoft  principle for responsible AI.

inclusiveness

privacy and security

reliability and safety

transparency

Show Suggested Answer



Actual exam question from Microsoft's AI-900

Question #: 7

Topic #: 1

[\[All AI-900 Questions\]](#)

DRAG DROP -

Match the types of AI workloads to the appropriate scenarios.

To answer, drag the appropriate workload type from the column on the left to its scenario on the right. Each workload type may be used once, more than once, or not at all.

NOTE: Each correct selection is worth one point.

Select and Place:

### Workloads Types

Anomaly detection

Computer vision

Conversational AI

Knowledge mining

Natural language processing

### Answer Area

Workload Type

An automated chat to answer questions about refunds and exchange

Workload Type

Determining whether a photo contains a person

Workload Type

Determining whether a review is positive or negative

Show Suggested Answer





Actual exam question from Microsoft's AI-900

Question #: 8

Topic #: 1

[\[All AI-900 Questions\]](#)

---

You are designing an AI system that empowers everyone, including people who have hearing, visual, and other impairments.

This is an example of which Microsoft guiding principle for responsible AI?

- A. fairness
- B. inclusiveness
- C. reliability and safety
- D. accountability

Show Suggested Answer







Actual exam question from Microsoft's AI-900

Question #: 9

Topic #: 1

[\[All AI-900 Questions\]](#)

DRAG DROP -

Match the Microsoft guiding principles for responsible AI to the appropriate descriptions.

To answer, drag the appropriate principle from the column on the left to its description on the right. Each principle may be used once, more than once, or not at all.

NOTE: Each correct selection is worth one point.

Select and Place:

### Principles

Accountability

Fairness

Inclusiveness

Privacy and security

Reliability and safety

### Answer Area

Principle

Ensure that AI systems operate as they were originally designed, respond to unanticipated conditions, and resist harmful manipulation.

Principle

Implementing processes to ensure that decisions made by AI systems can be overridden by humans.

Principle

Provide consumers with information and controls over the collection, use, and storage of their data.

Show Suggested Answer



Actual exam question from Microsoft's AI-900

Question #: 10

Topic #: 1

[\[All AI-900 Questions\]](#)

HOTSPOT -

To complete the sentence, select the appropriate option in the answer area.

Hot Area:

When developing an AI system for self-driving cars, the Microsoft for responsible AI should be applied to ensure consistent operation system during unexpected circumstances.

<input type="text"/>	▼
inclusiveness	
accountability	
reliability and safety	
fairness	

principle  
of the

Show Suggested Answer





Actual exam question from Microsoft's AI-900

Question #: 11

Topic #: 1

[\[All AI-900 Questions\]](#)

---

You are building an AI system.

Which task should you include to ensure that the service meets the Microsoft transparency principle for responsible AI?

- A. Ensure that all visuals have an associated text that can be read by a screen reader.
- B. Enable autoscaling to ensure that a service scales based on demand.
- C. Provide documentation to help developers debug code.
- D. Ensure that a training dataset is representative of the population.

Show Suggested Answer



Actual exam question from Microsoft's AI-900

Question #: 12

Topic #: 1

[\[All AI-900 Questions\]](#)

DRAG DROP -

Match the types of AI workloads to the appropriate scenarios.

To answer, drag the appropriate workload type from the column on the left to its scenario on the right. Each workload type may be used once, more than once, or not at all.

NOTE: Each correct selection is worth one point.

Select and Place:

### Workload Types

Anomaly detection

Computer vision

Machine Learning (Regression)

Natural language processing

### Answer Area

Workload Type

Identify handwritten letters.

Workload Type

Predict the sentiment of a social media post.

Workload Type

Identify a fraudulent credit card payment.

Workload Type

Predict next month's toy sales.

Show Suggested Answer



Actual exam question from Microsoft's AI-900

Question #: 13

Topic #: 1

[\[All AI-900 Questions\]](#)

HOTSPOT -

Select the answer that correctly completes the sentence.

## Answer Area

	▼
Key phrase extraction	
Language detection	
Named Entity Recognition (NER)	
Sentiment Analysis	

used to extract dates, quantities, and locations from text.

Show Suggested Answer





Actual exam question from Microsoft's AI-900

Question #: 14

Topic #: 1

[\[All AI-900 Questions\]](#)

---

What are three Microsoft guiding principles for responsible AI? Each correct answer presents a complete solution.

NOTE: Each correct selection is worth one point.

- A. knowledgeability
- B. decisiveness
- C. inclusiveness
- D. fairness
- E. opinionatedness
- F. reliability and safety

Show Suggested Answer



Actual exam question from Microsoft's AI-900

Question #: 15

Topic #: 1

[\[All AI-900 Questions\]](#)

HOTSPOT -

To complete the sentence, select the appropriate option in the answer area.

Hot Area:

**Answer Area**

Returning a bounding box that indicates the location of a vehicle in an image is an example of

	▼
image classification.	
object detection.	
optical character recognizer (OCR).	
semantic segmentation.	

Show Suggested Answer



Actual exam question from Microsoft's AI-900

Question #: 16

Topic #: 1

[\[All AI-900 Questions\]](#)

---

HOTSPOT -

To complete the sentence, select the appropriate option in the answer area.

Hot Area:

**Answer Area**

<input type="text"/>	▼
Feature engineering	
Feature selection	
Model evaluation	
Model training	

\_\_\_\_\_ is used to generate additional features.

Show Suggested Answer







Actual exam question from Microsoft's AI-900

Question #: 17

Topic #: 1

[\[All AI-900 Questions\]](#)

---

You run a charity event that involves posting photos of people wearing sunglasses on Twitter.

You need to ensure that you only retweet photos that meet the following requirements:

- ⇒ Include one or more faces.
- ⇒ Contain at least one person wearing sunglasses.

What should you use to analyze the images?

- A. the Verify operation in the Face service
- B. the Detect operation in the Face service
- C. the Describe Image operation in the Computer Vision service
- D. the Analyze Image operation in the Computer Vision service

Show Suggested Answer





Actual exam question from Microsoft's AI-900

Question #: 18

Topic #: 1

[\[All AI-900 Questions\]](#)

---

When you design an AI system to assess whether loans should be approved, the factors used to make the decision should be explainable.

This is an example of which Microsoft guiding principle for responsible AI?

- A. transparency
- B. inclusiveness
- C. fairness
- D. privacy and security

Show Suggested Answer



Actual exam question from Microsoft's AI-900

Question #: 19

Topic #: 1

[\[All AI-900 Questions\]](#)

HOTSPOT -

For each of the following statements, select Yes if the statement is true. Otherwise, select No.

NOTE: Each correct selection is worth one point.

Hot Area:

### Answer Area

Statements	Yes	No
Providing an explanation of the outcome of a credit loan application is an example of the Microsoft transparency principle for responsible AI.	<input type="radio"/>	<input type="radio"/>
A triage bot that prioritizes insurance claims based on injuries is an example of the Microsoft reliability and safety principle for responsible AI.	<input type="radio"/>	<input type="radio"/>
An AI solution that is offered at different prices for different sales territories is an example of the Microsoft inclusiveness principle for responsible AI.	<input type="radio"/>	<input type="radio"/>

Show Suggested Answer



Actual exam question from Microsoft's AI-900

Question #: 20

Topic #: 1

[\[All AI-900 Questions\]](#)

DRAG DROP -

Match the principles of responsible AI to appropriate requirements.

To answer, drag the appropriate principles from the column on the left to its requirement on the right. Each principle may be used once, more than once, or not at all. You may need to drag the split bar between panes or scroll to view content.

NOTE: Each correct selection is worth one point.

Select and Place:

### Principles

Fairness

Privacy and security

Reliability and safety

Transparency

### Answer Area

The system must not discriminate based on gender, race

Personal data must be visible only to approve

Automated decision-making processes must be recorded so that approved users can identify why a decision was made

Show Suggested Answer



Actual exam question from Microsoft's AI-900

Question #: 21

Topic #: 1

[\[All AI-900 Questions\]](#)

DRAG DROP -

You plan to deploy an Azure Machine Learning model as a service that will be used by client applications.

Which three processes should you perform in sequence before you deploy the model? To answer, move the appropriate processes from the list of processes to the answer area and arrange them in the correct order.

Select and Place:

### Processes

data encryption

model retraining

model training

data preparation

model evaluation



### Answer Area

Show Suggested Answer



Actual exam question from Microsoft's AI-900

Question #: 22

Topic #: 1

[\[All AI-900 Questions\]](#)

---

You are building an AI-based app.

You need to ensure that the app uses the principles for responsible AI.

Which two principles should you follow? Each correct answer presents part of the solution.

NOTE: Each correct selection is worth one point.

- A. Implement an Agile software development methodology
- B. Implement a process of AI model validation as part of the software review process
- C. Establish a risk governance committee that includes members of the legal team, members of the risk management team, and a privacy officer
- D. Prevent the disclosure of the use of AI-based algorithms for automated decision making

Show Suggested Answer



Actual exam question from Microsoft's AI-900

Question #: 23

Topic #: 1

[\[All AI-900 Questions\]](#)

HOTSPOT -

To complete the sentence, select the appropriate option in the answer area.

Hot Area:

## Answer Area

According to Microsoft's 

	▼
accountability	
fairness	
inclusiveness	
transparency	

 principle of responsible AI,

AI systems should **NOT** reflect biases from the data sets that are used to train the systems.

Show Suggested Answer



Actual exam question from Microsoft's AI-900

Question #: 24

Topic #: 1

[\[All AI-900 Questions\]](#)

HOTSPOT -

Select the answer that correctly completes the sentence.

Hot Area:

### Answer Area

According to Microsoft's

accountability
fairness
inclusiveness
transparency

principle of responsible AI,

AI systems should **NOT** reflect biases from the data sets that are used to train the systems.

Show Suggested Answer





Actual exam question from Microsoft's AI-900

Question #: 25

Topic #: 1

[\[All AI-900 Questions\]](#)

DRAG DROP -

Match the types of AI workloads to the appropriate scenarios.

To answer, drag the appropriate workload type from the column on the left to its scenario on the right. Each workload type may be used once, more than once, or not at all.

NOTE: Each correct selection is worth one point.

Select and Place:

### Workload Types

Anomaly detection

Computer vision

Knowledge mining

Natural language processing

### Answer Area

Workload type

An automated chatbot to answer questions about refunds and exchanges

Workload type

Determining whether a photo contains a person

Workload type

Determining whether a review is positive or negative

Show Suggested Answer



Actual exam question from Microsoft's AI-900

Question #: 26

Topic #: 1

[\[All AI-900 Questions\]](#)

DRAG DROP -

Match the machine learning tasks to the appropriate scenarios.

To answer, drag the appropriate task from the column on the left to its scenario on the right. Each task may be used once, more than once, or not at all.

NOTE: Each correct selection is worth one point.

Select and Place:

### Learning Types

Feature engineering

Feature selection

Model deployment

Model evaluation

Model training

### Answer Area

Task

Examining the values of a confusion matrix

Task

Splitting a date into month, day, and year fields

Task

Picking temperature and pressure to train a weather model

Show Suggested Answer



Actual exam question from Microsoft's AI-900

Question #: 27

Topic #: 1

[\[All AI-900 Questions\]](#)

---

HOTSPOT -

To complete the sentence, select the appropriate option in the answer area.

Hot Area:

**Answer Area**

Data values that influence the prediction of a model are called

	▼
dependant variables.	
features.	
identifiers.	
labels.	

Show Suggested Answer



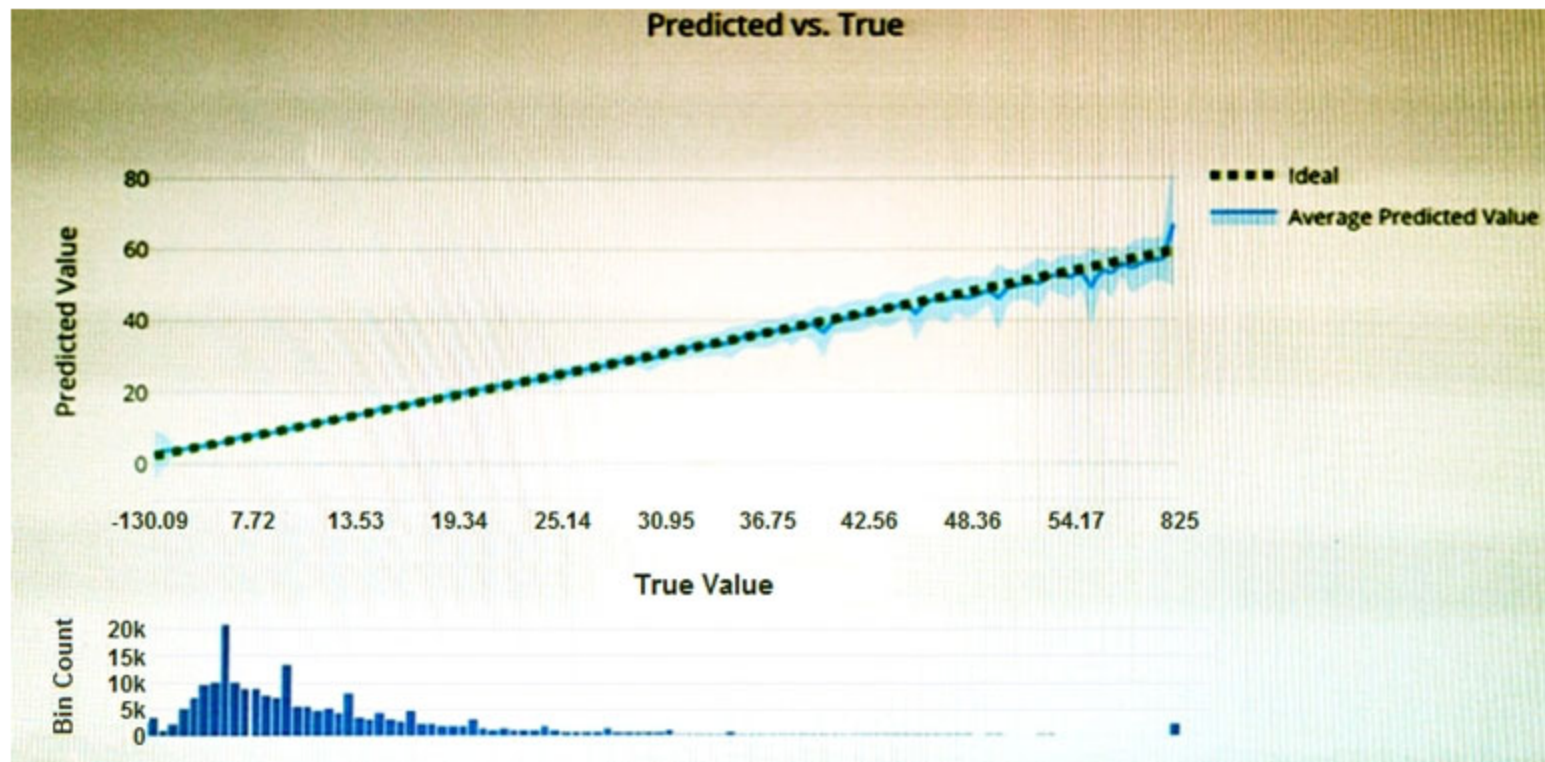
Actual exam question from Microsoft's AI-900

Question #: 28

Topic #: 1

[\[All AI-900 Questions\]](#)

You have the Predicted vs. True chart shown in the following exhibit.



Which type of model is the chart used to evaluate?

- A. classification
- B. regression
- C. clustering

Show Suggested Answer



Actual exam question from Microsoft's AI-900

Question #: 29

Topic #: 1

[\[All AI-900 Questions\]](#)

---

Which type of machine learning should you use to predict the number of gift cards that will be sold next month?

- A. classification
- B. regression
- C. clustering

Show Suggested Answer



Actual exam question from Microsoft's AI-900

Question #: 30

Topic #: 1

[\[All AI-900 Questions\]](#)

---

You have a dataset that contains information about taxi journeys that occurred during a given period.

You need to train a model to predict the fare of a taxi journey.

What should you use as a feature?

- A. the number of taxi journeys in the dataset
- B. the trip distance of individual taxi journeys
- C. the fare of individual taxi journeys
- D. the trip ID of individual taxi journeys

Show Suggested Answer





Actual exam question from Microsoft's AI-900

Question #: 31

Topic #: 1

[\[All AI-900 Questions\]](#)

---

You need to predict the sea level in meters for the next 10 years.

Which type of machine learning should you use?

- A. classification
- B. regression
- C. clustering

Show Suggested Answer





Actual exam question from Microsoft's AI-900

Question #: 32

Topic #: 1

[\[All AI-900 Questions\]](#)

HOTSPOT -

For each of the following statements, select Yes if the statement is true. Otherwise, select No.

NOTE: Each correct selection is worth one point.

Hot Area:

### Answer Area

Statements	Yes	No
Automated machine learning is the process of automating the time-consuming, iterative tasks of machine learning model development.	<input type="radio"/>	<input type="radio"/>
Automated machine learning can automatically infer the training data from the use case provided.	<input type="radio"/>	<input type="radio"/>
Automated machine learning works by running multiple training iterations that are scored and ranked by the metrics you specify.	<input type="radio"/>	<input type="radio"/>
Automated machine learning enables you to specify a dataset and will automatically understand which label to predict.	<input type="radio"/>	<input type="radio"/>

Show Suggested Answer





Actual exam question from Microsoft's AI-900

Question #: 33

Topic #: 1

[\[All AI-900 Questions\]](#)

---

HOTSPOT -

To complete the sentence, select the appropriate option in the answer area.

Hot Area:

**Answer Area**

A banking system that predicts whether a loan will be repaid is an example of the  type of machine learning.

classification

regression

clustering

Show Suggested Answer





Actual exam question from Microsoft's AI-900

Question #: 34

Topic #: 1

[\[All AI-900 Questions\]](#)

HOTSPOT -

For each of the following statements, select Yes if the statement is true. Otherwise, select No.

NOTE: Each correct selection is worth one point.

Hot Area:

### Answer Area

Statements	Yes	No
Labelling is the process of tagging training data with known values.	<input type="radio"/>	<input type="radio"/>
You should evaluate a model by using the same data used to train the model.	<input type="radio"/>	<input type="radio"/>
Accuracy is always the primary metric used to measure a model's performance.	<input type="radio"/>	<input type="radio"/>

Show Suggested Answer





Actual exam question from Microsoft's AI-900

Question #: 35

Topic #: 1

[\[All AI-900 Questions\]](#)

---

Which service should you use to extract text, key/value pairs, and table data automatically from scanned documents?

- A. Form Recognizer
- B. Text Analytics
- C. Language Understanding
- D. Custom Vision

Show Suggested Answer



Actual exam question from Microsoft's AI-900

Question #: 36

Topic #: 1

[\[All AI-900 Questions\]](#)

HOTSPOT -

To complete the sentence, select the appropriate option in the answer area.

Hot Area:

**Answer Area**

The ability to extract subtotals and totals from a receipt is a capability of the  service.

Custom Vision

Form Recognizer

Ink Recognizer

Text Analytics

Show Suggested Answer





Actual exam question from Microsoft's AI-900

Question #: 37

Topic #: 1

[\[All AI-900 Questions\]](#)

---

You use Azure Machine Learning designer to publish an inference pipeline.

Which two parameters should you use to access the web service? Each correct answer presents part of the solution.

NOTE: Each correct selection is worth one point.

- A. the model name
- B. the training endpoint
- C. the authentication key
- D. the REST endpoint

Show Suggested Answer



Actual exam question from Microsoft's AI-900

Question #: 38

Topic #: 1

[\[All AI-900 Questions\]](#)

HOTSPOT -

To complete the sentence, select the appropriate option in the answer area.

Hot Area:

### Answer Area

From Azure Machine Learning designer, to deploy a real-time inference pipeline as a service for others to consume, you must deploy the model to

- a local web service.
- Azure Container Instances.
- Azure Kubernetes Service (AKS).
- Azure Machine Learning compute.

Show Suggested Answer



Actual exam question from Microsoft's AI-900

Question #: 39

Topic #: 1

[\[All AI-900 Questions\]](#)

HOTSPOT -

To complete the sentence, select the appropriate option in the answer area.

Hot Area:

### Answer Area

Predicting how many hours of overtime a delivery person will work based on the number of order received is an example of

classification.

clustering.

regression.

Show Suggested Answer





Actual exam question from Microsoft's AI-900

Question #: 40

Topic #: 1

[\[All AI-900 Questions\]](#)

HOTSPOT -

For each of the following statements, select Yes if the statement is true. Otherwise, select No.

NOTE: Each correct selection is worth one point.

Hot Area:

### Answer Area

Statements	Yes	No
Azure Machine Learning designer provides a drag-and-drop visual canvas to build, test, and deploy machine learning models.	<input type="radio"/>	<input type="radio"/>
Azure Machine Learning designer enables you to save your progress as a pipeline draft.	<input type="radio"/>	<input type="radio"/>
Azure Machine Learning designer enables you to include custom JavaScript functions.	<input type="radio"/>	<input type="radio"/>

Show Suggested Answer





Actual exam question from Microsoft's AI-900

Question #: 41

Topic #: 1

[\[All AI-900 Questions\]](#)

HOTSPOT -

You have the following dataset.

Household Income	Postal Code	House Price Category
20,000	55555	Low
23,000	20541	Middle
80,000	87960	High

You plan to use the dataset to train a model that will predict the house price categories of houses.

What are Household Income and House Price Category? To answer, select the appropriate option in the answer area.

NOTE: Each correct selection is worth one point.

Hot Area:

### Answer Area

Household Income:

House Price Category:

Show Suggested Answer

Actual exam question from Microsoft's AI-900

Question #: 42

Topic #: 1

[\[All AI-900 Questions\]](#)

---

HOTSPOT -

To complete the sentence, select the appropriate option in the answer area.

Hot Area:

**Answer Area**

Azure Machine Learning designer lets you create machine learning models by

- adding and connecting modules on a visual canvas.
- automatically performing common data preparation tasks.
- automatically selecting an algorithm to build the most accurate model.
- using a code-first notebook experience.

Show Suggested Answer





Actual exam question from Microsoft's AI-900

Question #: 43

Topic #: 1

[\[All AI-900 Questions\]](#)

HOTSPOT -

For each of the following statements, select Yes if the statement is true. Otherwise, select No.

NOTE: Each correct selection is worth one point.

Hot Area:

**Answer Area**

Statements	Yes	No
Automated machine learning provides you with the ability to include custom Python scripts in a training pipeline.	<input type="radio"/>	<input type="radio"/>
Automated machine learning implements machine learning solutions without the need for programming experience.	<input type="radio"/>	<input type="radio"/>
Automated machine learning provides you with the ability to visually connect datasets and modules on an interactive canvas.	<input type="radio"/>	<input type="radio"/>

Show Suggested Answer





Actual exam question from Microsoft's AI-900

Question #: 44

Topic #: 1

[\[All AI-900 Questions\]](#)

---

A medical research project uses a large anonymized dataset of brain scan images that are categorized into predefined brain haemorrhage types.

You need to use machine learning to support early detection of the different brain haemorrhage types in the images before the images are reviewed by a person.

This is an example of which type of machine learning?

- A. clustering
- B. regression
- C. classification

[Show Suggested Answer](#)





Actual exam question from Microsoft's AI-900

Question #: 45

Topic #: 1

[\[All AI-900 Questions\]](#)

---

When training a model, why should you randomly split the rows into separate subsets?

- A. to train the model twice to attain better accuracy
- B. to train multiple models simultaneously to attain better performance
- C. to test the model by using data that was not used to train the model

Show Suggested Answer



Actual exam question from Microsoft's AI-900

Question #: 46

Topic #: 1

[\[All AI-900 Questions\]](#)

---

You are evaluating whether to use a basic workspace or an enterprise workspace in Azure Machine Learning.

What are two tasks that require an enterprise workspace? Each correct answer presents a complete solution.

NOTE: Each correct selection is worth one point.

- A. Use a graphical user interface (GUI) to run automated machine learning experiments.
- B. Create a compute instance to use as a workstation.
- C. Use a graphical user interface (GUI) to define and run machine learning experiments from Azure Machine Learning designer.
- D. Create a dataset from a comma-separated value (CSV) file.

Show Suggested Answer



Actual exam question from Microsoft's AI-900

Question #: 47

Topic #: 1

[\[All AI-900 Questions\]](#)

You need to predict the income range of a given customer by using the following dataset.

First Name	Last Name	Age	Education Level	Income Range
Orlando	Gee	45	University	25,000-50,000
Keith	Harris	36	High school	25,000-50,000
Donna	Carreras	52	University	50,000-75,000
Janet	Gates	21	University	75,000-100,000
Lucy	Harrington	68	High school	50,000-75,000

Which two fields should you use as features? Each correct answer presents a complete solution.

NOTE: Each correct selection is worth one point.

- A. Education Level
- B. Last Name
- C. Age
- D. Income Range
- E. First Name

Show Suggested Answer





Actual exam question from Microsoft's AI-900

Question #: 48

Topic #: 1

[\[All AI-900 Questions\]](#)

---

You are building a tool that will process images from retail stores and identify the products of competitors.

The solution will use a custom model.

Which Azure Cognitive Services service should you use?

- A. Custom Vision
- B. Form Recognizer
- C. Face
- D. Computer Vision

Show Suggested Answer





Actual exam question from Microsoft's AI-900

Question #: 49

Topic #: 1

[\[All AI-900 Questions\]](#)

HOTSPOT -

For each of the following statements, select Yes if the statement is true. Otherwise, select No.

NOTE: Each correct selection is worth one point.

Hot Area:

### Answer Area

Statements	Yes	No
Organizing documents into groups based on similarities of the text contained in the documents is an example of clustering.	<input type="radio"/>	<input type="radio"/>
Grouping similar patients based on symptoms and diagnostic test results is an example of clustering.	<input type="radio"/>	<input type="radio"/>
Predicting whether a person will develop mild, moderate, or severe allergy symptoms based on pollen count is an example of clustering.	<input type="radio"/>	<input type="radio"/>

Show Suggested Answer



Actual exam question from Microsoft's AI-900

Question #: 50

Topic #: 1

[\[All AI-900 Questions\]](#)

HOTSPOT -

For each of the following statements, select Yes if the statement is true. Otherwise, select No.

NOTE: Each correct selection is worth one point.

Hot Area:

### Answer Area

Statements	Yes	No
A validation set includes the set of input examples that will be used to train a model.	<input type="radio"/>	<input type="radio"/>
A validation set can be used to determine how well a model predicts labels.	<input type="radio"/>	<input type="radio"/>
A validation set can be used to verify that all the training data was used to train the model.	<input type="radio"/>	<input type="radio"/>

Show Suggested Answer



Actual exam question from Microsoft's AI-900

Question #: 51

Topic #: 1

[\[All AI-900 Questions\]](#)

---

What are two metrics that you can use to evaluate a regression model? Each correct answer presents a complete solution.

NOTE: Each correct selection is worth one point.

- A. coefficient of determination (R2)
- B. F1 score
- C. root mean squared error (RMSE)
- D. area under curve (AUC)
- E. balanced accuracy

Show Suggested Answer



Actual exam question from Microsoft's AI-900

Question #: 52

Topic #: 1

[\[All AI-900 Questions\]](#)

HOTSPOT -

To complete the sentence, select the appropriate option in the answer area.

Hot Area:

### Answer Area

Predicting how many vehicles will travel across a bridge on a given day is an example of

classification.

clustering.

regression.

Show Suggested Answer



Actual exam question from Microsoft's AI-900

Question #: 53

Topic #: 1

[\[All AI-900 Questions\]](#)

DRAG DROP -

You need to use Azure Machine Learning designer to build a model that will predict automobile prices.

Which type of modules should you use to complete the model? To answer, drag the appropriate modules to the correct locations. Each module may be used once, more than once, or not at all. You may need to drag the split bar between panes or scroll to view content.

NOTE: Each correct selection is worth one point.

Select and Place:

### Modules

Convert to CSV

K-Means Clustering

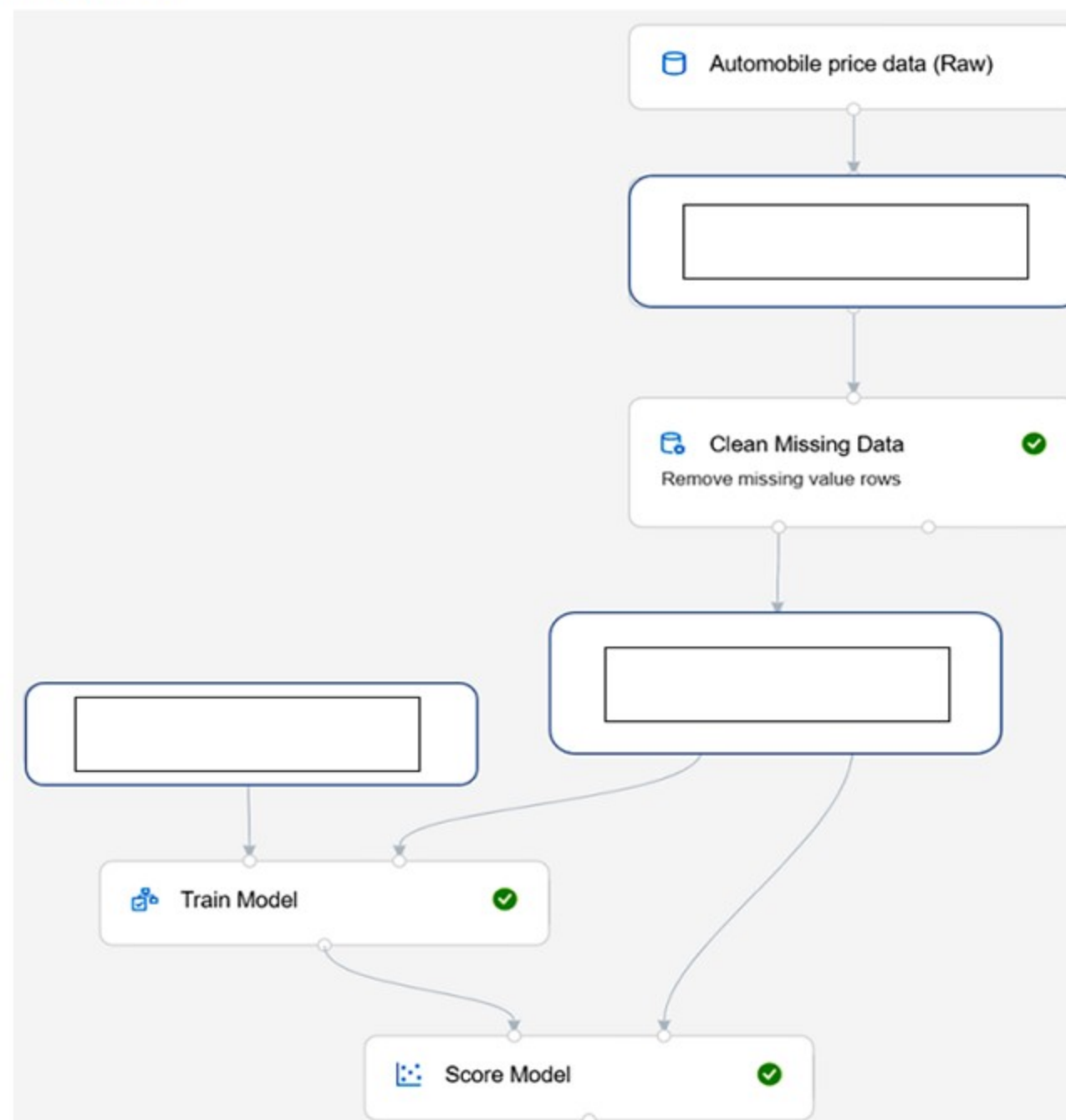
Linear Regression

Split Data

Select Columns in Dataset

Summarize Data

### Answer Area



Show Suggested Answer



Actual exam question from Microsoft's AI-900

Question #: 54

Topic #: 1

[\[All AI-900 Questions\]](#)

---

Which type of machine learning should you use to identify groups of people who have similar purchasing habits?

- A. classification
- B. regression
- C. clustering

Show Suggested Answer



Actual exam question from Microsoft's AI-900

Question #: 55

Topic #: 1

[\[All AI-900 Questions\]](#)

HOTSPOT -

To complete the sentence, select the appropriate option in the answer area.

Hot Area:

### Answer Area

<input type="text"/>	▼
Classification	
Clustering	
Regression	

\_\_\_\_\_ models can be used to predict the sale price of auctioned items.

Show Suggested Answer



Actual exam question from Microsoft's AI-900

Question #: 56

Topic #: 1

[\[All AI-900 Questions\]](#)

---

Which metric can you use to evaluate a classification model?

- A. true positive rate
- B. mean absolute error (MAE)
- C. coefficient of determination (R<sup>2</sup>)
- D. root mean squared error (RMSE)

Show Suggested Answer







Actual exam question from Microsoft's AI-900

Question #: 57

Topic #: 1

[\[All AI-900 Questions\]](#)

---

Which two components can you drag onto a canvas in Azure Machine Learning designer? Each correct answer presents a complete solution.

NOTE: Each correct selection is worth one point.

- A. dataset
- B. compute
- C. pipeline
- D. module

[Show Suggested Answer](#)





Actual exam question from Microsoft's AI-900

Question #: 58

Topic #: 1

[\[All AI-900 Questions\]](#)

---

You need to create a training dataset and validation dataset from an existing dataset.

Which module in the Azure Machine Learning designer should you use?

- A. Select Columns in Dataset
- B. Add Rows
- C. Split Data
- D. Join Data

[Show Suggested Answer](#)





Actual exam question from Microsoft's AI-900

Question #: 59

Topic #: 1

[\[All AI-900 Questions\]](#)

DRAG DROP -

Match the types of machine learning to the appropriate scenarios.

To answer, drag the appropriate machine learning type from the column on the left to its scenario on the right. Each machine learning type may be used once, more than once, or not at all.

NOTE: Each correct selection is worth one point.

Select and Place:

### Learning Types

Classification

Clustering

Regression

### Answer Area

Learning Type

Predict how many minutes late a flight will arrive based on the amount of snowfall at an airport.

Learning Type

Segment customers into different groups to support a marketing department.

Learning Type

Predict whether a student will complete a university course.

Show Suggested Answer



Actual exam question from Microsoft's AI-900

Question #: 60

Topic #: 1

[\[All AI-900 Questions\]](#)

HOTSPOT -

To complete the sentence, select the appropriate option in the answer area.

Hot Area:

### Answer Area

	▼
Accuracy	
Confidence	
Root Mean Square Error	
Sentiment	

\_\_\_\_\_ is the calculated probability of a correct image classification.

Show Suggested Answer

Actual exam question from Microsoft's AI-900

Question #: 61

Topic #: 1

[\[All AI-900 Questions\]](#)

HOTSPOT -

To complete the sentence, select the appropriate option in the answer area.

Hot Area:

### Answer Area

Ensuring an AI system does not provide a prediction when important fields contain unusual or missing values is  principle for responsible AI.

- |                          |   |
|--------------------------|---|
| <input type="text"/>     | ▼ |
| an inclusiveness         |   |
| a privacy and security   |   |
| a reliability and safety |   |
| a transparency           |   |

Show Suggested Answer



Actual exam question from Microsoft's AI-900

Question #: 62

Topic #: 1

[\[All AI-900 Questions\]](#)

HOTSPOT -

To complete the sentence, select the appropriate option in the answer area.

Hot Area:

### Answer Area

Ensuring that the numeric variables in training data are on a similar scale is an example of

	▼
data ingestion.	
feature engineering.	
feature selection.	
model training.	

Show Suggested Answer





Actual exam question from Microsoft's AI-900

Question #: 63

Topic #: 1

[\[All AI-900 Questions\]](#)

HOTSPOT -

To complete the sentence, select the appropriate option in the answer area.

Hot Area:

### Answer Area

Assigning classes to images before training a classification model is an example of

	▼
evaluation.	
feature engineering	
hyperparameter tuning.	
labeling.	

Show Suggested Answer



Actual exam question from Microsoft's AI-900

Question #: 64

Topic #: 1

[\[All AI-900 Questions\]](#)

HOTSPOT -

You have an Azure Machine Learning model that predicts product quality. The model has a training dataset that contains 50,000 records. A sample of the data is shown in the following table.

Date	Time	Mass (kg)	Temperature (C)	Quality Test
26/02/2021	15:31:07	2.108	62.5	Pass
26/02/2021	15:31:39	2.099	62.4	Pass
26/02/2021	02:32:21	2.098	66.4	Fail

For each of the following statements, select Yes if the statement is true. Otherwise, select No.

NOTE: Each correct selection is worth one point.

Hot Area:

## Answer Area

Statements	Yes	No
Mass (kg) is a feature.	<input type="radio"/>	<input type="radio"/>
Quality Test is a label.	<input type="radio"/>	<input type="radio"/>
Temperature (C) is a label.	<input type="radio"/>	<input type="radio"/>

Show Suggested Answer



Actual exam question from Microsoft's AI-900

Question #: 65

Topic #: 1

[\[All AI-900 Questions\]](#)

HOTSPOT -

For each of the following statements, select Yes if the statement is true. Otherwise, select No.

NOTE: Each correct selection is worth one point.

Hot Area:

## Answer Area

Statements	Yes	No
You train a regression model by using unlabeled data.	<input type="radio"/>	<input type="radio"/>
The classification technique is used to predict sequential numerical data over time.	<input type="radio"/>	<input type="radio"/>
Grouping items by their common characteristics is an example of clustering.	<input type="radio"/>	<input type="radio"/>

Show Suggested Answer





Actual exam question from Microsoft's AI-900

Question #: 66

Topic #: 1

[\[All AI-900 Questions\]](#)

---

Which two actions are performed during the data ingestion and data preparation stage of an Azure Machine Learning process? Each correct answer presents part of the solution.

NOTE: Each correct selection is worth one point.

- A. Calculate the accuracy of the model.
- B. Score test data by using the model.
- C. Combine multiple datasets.
- D. Use the model for real-time predictions.
- E. Remove records that have missing values.

Show Suggested Answer





Actual exam question from Microsoft's AI-900

Question #: 67

Topic #: 1

[\[All AI-900 Questions\]](#)

---

You need to predict the animal population of an area.  
Which Azure Machine Learning type should you use?

- A. regression
- B. clustering
- C. classification

Show Suggested Answer





Actual exam question from Microsoft's AI-900

Question #: 68

Topic #: 1

[\[All AI-900 Questions\]](#)

---

Which two languages can you use to write custom code for Azure Machine Learning designer? Each correct answer presents a complete solution.

NOTE: Each correct selection is worth one point.

- A. Python
- B. R
- C. C#
- D. Scala

[Show Suggested Answer](#)



Actual exam question from Microsoft's AI-900

Question #: 69

Topic #: 1

[\[All AI-900 Questions\]](#)

HOTSPOT -

For each of the following statements, select Yes if the statement is true. Otherwise, select No.

NOTE: Each correct selection is worth one point.

Hot Area:

## Answer Area

### Statements

Yes

No

For a regression model, labels must be numeric.

For a clustering model, labels must be used.

For a classification model, labels must be numeric.

Show Suggested Answer





Actual exam question from Microsoft's AI-900

Question #: 70

Topic #: 1

[\[All AI-900 Questions\]](#)

---

Your company wants to build a recycling machine for bottles. The recycling machine must automatically identify bottles of the correct shape and reject all other items.

Which type of AI workload should the company use?

- A. anomaly detection
- B. conversational AI
- C. computer vision
- D. natural language processing

Show Suggested Answer



Actual exam question from Microsoft's AI-900

Question #: 71

Topic #: 1

[\[All AI-900 Questions\]](#)

HOTSPOT -

For each of the following statements, select Yes if the statement is true. Otherwise, select No.

NOTE: Each correct selection is worth one point.

Hot Area:

### Answer Area

Statements	Yes	No
When creating an object detection model in the Custom Vision service, you must choose a classification type of either <b>Multilabel</b> or <b>Multiclass</b> .	<input type="radio"/>	<input type="radio"/>
You can create an object detection model in the Custom Vision service to find the location of content within an image.	<input type="radio"/>	<input type="radio"/>
When creating an object detection model in the Custom Vision service, you can select from a set of predefined domains.	<input type="radio"/>	<input type="radio"/>

Show Suggested Answer



Actual exam question from Microsoft's AI-900

Question #: 72

Topic #: 1

[\[All AI-900 Questions\]](#)

---

In which two scenarios can you use the Form Recognizer service? Each correct answer presents a complete solution.

NOTE: Each correct selection is worth one point.

- A. Extract the invoice number from an invoice.
- B. Translate a form from French to English.
- C. Find image of product in a catalog.
- D. Identify the retailer from a receipt.

[Show Suggested Answer](#)





Actual exam question from Microsoft's AI-900

Question #: 73

Topic #: 1

[\[All AI-900 Questions\]](#)

HOTSPOT -

Select the answer that correctly completes the sentence.

Hot Area:

## Answer Area

Counting the number of animals in an area based on a video feed is an example of

forecasting.

computer vision.

conversational AI.

anomaly detection.

Show Suggested Answer



Actual exam question from Microsoft's AI-900

Question #: 74

Topic #: 1

[\[All AI-900 Questions\]](#)

HOTSPOT -

You have a database that contains a list of employees and their photos.

You are tagging new photos of the employees.

For each of the following statements select Yes if the statement is true. Otherwise, select No.

NOTE: Each correct selection is worth one point.

Hot Area:

### Answer Area

Statements	Yes	No
The Face service can be used to perform facial recognition for employees	<input type="radio"/>	<input type="radio"/>
The Face service will be more accurate if you provide more sample photos of each employee from different angles.	<input type="radio"/>	<input type="radio"/>
If an employee is wearing sunglasses, the Face service will always fail to recognize the employee.	<input type="radio"/>	<input type="radio"/>

Show Suggested Answer



Actual exam question from Microsoft's AI-900

Question #: 75

Topic #: 1

[\[All AI-900 Questions\]](#)

---

You need to develop a mobile app for employees to scan and store their expenses while travelling.

Which type of computer vision should you use?

- A. semantic segmentation
- B. image classification
- C. object detection
- D. optical character recognition (OCR)

Show Suggested Answer





Actual exam question from Microsoft's AI-900

Question #: 76

Topic #: 1

[\[All AI-900 Questions\]](#)

HOTSPOT -

For each of the following statements, select Yes if the statement is true. Otherwise, select No.

NOTE: Each correct selection is worth one point.

Hot Area:

### Answer Area

Statements	Yes	No
The Custom Vision service can be used to detect objects in an image.	<input type="radio"/>	<input type="radio"/>
The Custom Vision service requires that you provide your own data to train the model.	<input type="radio"/>	<input type="radio"/>
The Custom Vision service can be used to analyze video files.	<input type="radio"/>	<input type="radio"/>

Show Suggested Answer





Actual exam question from Microsoft's AI-900

Question #: 77

Topic #: 1

[\[All AI-900 Questions\]](#)

---

You are processing photos of runners in a race.

You need to read the numbers on the runners' shirts to identity the runners in the photos.

Which type of computer vision should you use?

- A. facial recognition
- B. optical character recognition (OCR)
- C. image classification
- D. object detection

Show Suggested Answer



Actual exam question from Microsoft's AI-900

Question #: 78

Topic #: 1

[\[All AI-900 Questions\]](#)

DRAG DROP -

Match the types of machine learning to the appropriate scenarios.

To answer, drag the appropriate machine learning type from the column on the left to its scenario on the right. Each machine learning type may be used once, more than once, or not at all.

NOTE: Each correct selection is worth one point.

Select and Place:

### Machine Learning Types

Facial detection

Facial recognition

Image classification

Object detection

Optical character recognition (OCR)

Semantic segmentation

### Answer Area

Machine Learning Type

Separate images of polar bears and brown bears.

Machine Learning Type

Determine the location of a bear in a photo.

Machine Learning Type

Determine which pixels in an image are part of a bear.

Show Suggested Answer





Actual exam question from Microsoft's AI-900

Question #: 79

Topic #: 1

[\[All AI-900 Questions\]](#)

---

You use drones to identify where weeds grow between rows of crops to send an instruction for the removal of the weeds.

This is an example of which type of computer vision?

- A. object detection
- B. optical character recognition (OCR)
- C. scene segmentation

Show Suggested Answer





Actual exam question from Microsoft's AI-900

Question #: 80

Topic #: 1

[\[All AI-900 Questions\]](#)

DRAG DROP -

Match the facial recognition tasks to the appropriate questions.

To answer, drag the appropriate task from the column on the left to its question on the right. Each task may be used once, more than once, or not at all.

NOTE: Each correct selection is worth one point.

Select and Place:

#### Tasks

grouping

identification

similarity

verification

#### Answer Area

Task

Do two images of a face belong to the same person?

Task

Does this person look like other people?

Task

Do all the faces belong together?

Task

Who is this person in this group of people?

Show Suggested Answer





Actual exam question from Microsoft's AI-900

Question #: 81

Topic #: 1

[\[All AI-900 Questions\]](#)

DRAG DROP -

Match the types of computer vision workloads to the appropriate scenarios.

To answer, drag the appropriate workload type from the column on the left to its scenario on the right. Each workload type may be used once, more than once, or not at all.

NOTE: Each correct selection is worth one point.

Select and Place:

### Workloads Types

Facial recognition

Image classification

Object detection

Optical character recognition (OCR)

### Answer Area

Workload Type

Identify celebrities in images.

Workload Type

Extract movie title names from movie poster images.

Workload Type

Locate vehicles in images.

Show Suggested Answer



Actual exam question from Microsoft's AI-900

Question #: 82

Topic #: 1

[\[All AI-900 Questions\]](#)

---

You need to determine the location of cars in an image so that you can estimate the distance between the cars.

Which type of computer vision should you use?

- A. optical character recognition (OCR)
- B. object detection
- C. image classification
- D. face detection

Show Suggested Answer



Actual exam question from Microsoft's AI-900

Question #: 83

Topic #: 1

[\[All AI-900 Questions\]](#)

HOTSPOT -

To complete the sentence, select the appropriate option in the answer area.

Hot Area:

### Answer Area

You can use the  service to train an object detection model by using your own images.

Computer Vision

Custom Vision

Form Recognizer

Video Indexer

Show Suggested Answer



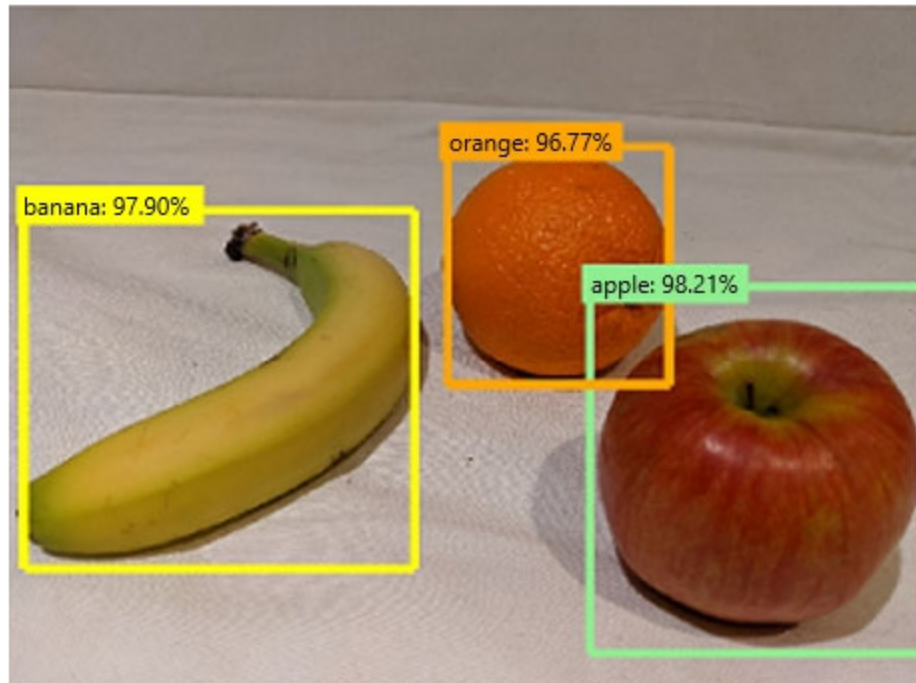
Actual exam question from Microsoft's AI-900

Question #: 84

Topic #: 1

[\[All AI-900 Questions\]](#)

You send an image to a Computer Vision API and receive back the annotated image shown in the exhibit.



Which type of computer vision was used?

- A. object detection
- B. face detection
- C. optical character recognition (OCR)
- D. image classification

Show Suggested Answer



Actual exam question from Microsoft's AI-900

Question #: 85

Topic #: 1

[\[All AI-900 Questions\]](#)

---

What are two tasks that can be performed by using the Computer Vision service? Each correct answer presents a complete solution.

NOTE: Each correct selection is worth one point.

- A. Train a custom image classification model.
- B. Detect faces in an image.
- C. Recognize handwritten text.
- D. Translate the text in an image between languages.

Show Suggested Answer





Actual exam question from Microsoft's AI-900

Question #: 86

Topic #: 1

[\[All AI-900 Questions\]](#)

---

What is a use case for classification?

- A. predicting how many cups of coffee a person will drink based on how many hours the person slept the previous night.
- B. analyzing the contents of images and grouping images that have similar colors
- C. predicting whether someone uses a bicycle to travel to work based on the distance from home to work
- D. predicting how many minutes it will take someone to run a race based on past race times

Show Suggested Answer



Actual exam question from Microsoft's AI-900

Question #: 87

Topic #: 1

[\[All AI-900 Questions\]](#)

---

What are two tasks that can be performed by using computer vision? Each correct answer presents a complete solution.

NOTE: Each correct selection is worth one point.

- A. Predict stock prices.
- B. Detect brands in an image.
- C. Detect the color scheme in an image
- D. Translate text between languages.
- E. Extract key phrases.

Show Suggested Answer





Actual exam question from Microsoft's AI-900

Question #: 88

Topic #: 1

[\[All AI-900 Questions\]](#)

---

You need to build an image tagging solution for social media that tags images of your friends automatically.

Which Azure Cognitive Services service should you use?

- A. Face
- B. Form Recognizer
- C. Text Analytics
- D. Computer Vision

Show Suggested Answer







Actual exam question from Microsoft's AI-900

Question #: 89

Topic #: 1

[\[All AI-900 Questions\]](#)

---

In which two scenarios can you use the Form Recognizer service? Each correct answer presents a complete solution.

NOTE: Each correct selection is worth one point.

- A. Identify the retailer from a receipt
- B. Translate from French to English
- C. Extract the invoice number from an invoice
- D. Find images of products in a catalog

[Show Suggested Answer](#)





Actual exam question from Microsoft's AI-900

Question #: 90

Topic #: 1

[\[All AI-900 Questions\]](#)

DRAG DROP -

Match the facial recognition tasks to the appropriate questions.

To answer, drag the appropriate task from the column on the left to its question on the right. Each task may be used once, more than once, or not at all.

NOTE: Each correct selection is worth one point.

Select and Place:

### Tasks

grouping

identification

similarity

verification

### Answer Area

Task

Do two images of a face belong to the same person?

Task

Does this person look like other people?

Task

Who is this person in this group of people?

Show Suggested Answer





Actual exam question from Microsoft's AI-900

Question #: 91

Topic #: 1

[\[All AI-900 Questions\]](#)

---

Which Computer Vision feature can you use to generate automatic captions for digital photographs?

- A. Recognize text.
- B. Identify the areas of interest.
- C. Detect objects.
- D. Describe the images.

Show Suggested Answer





Actual exam question from Microsoft's AI-900

Question #: 92

Topic #: 1

[\[All AI-900 Questions\]](#)

---

Which service should you use to extract text, key/value pairs, and table data automatically from scanned documents?

- A. Custom Vision
- B. Face
- C. Form Recognizer
- D. Language

Show Suggested Answer



Actual exam question from Microsoft's AI-900

Question #: 93

Topic #: 1

[\[All AI-900 Questions\]](#)

HOTSPOT -

Select the answer that correctly completes the sentence.

Hot Area:

### Answer Area

Object detection
Facial recognition
Image classification
Optical character recognition (OCR)

extracts text from handwritten documents.

Show Suggested Answer



Actual exam question from Microsoft's AI-900

Question #: 94

Topic #: 1

[\[All AI-900 Questions\]](#)

---

You are developing a solution that uses the Text Analytics service.

You need to identify the main talking points in a collection of documents.

Which type of natural language processing should you use?

- A. entity recognition
- B. key phrase extraction
- C. sentiment analysis
- D. language detection

Show Suggested Answer





Actual exam question from Microsoft's AI-900

Question #: 95

Topic #: 1

[\[All AI-900 Questions\]](#)

---

In which two scenarios can you use speech recognition? Each correct answer presents a complete solution.

NOTE: Each correct selection is worth one point.

- A. an in-car system that reads text messages aloud
- B. providing closed captions for recorded or live videos
- C. creating an automated public address system for a train station
- D. creating a transcript of a telephone call or meeting

[Show Suggested Answer](#)



Actual exam question from Microsoft's AI-900

Question #: 96

Topic #: 1

[\[All AI-900 Questions\]](#)

HOTSPOT -

To complete the sentence, select the appropriate option in the answer area.

Hot Area:

**Answer Area**

While presenting at a conference, your session is transcribed into subtitles for the audience. This is an example of

sentiment analysis.

speech recognition.

speech synthesis.

translation.

Show Suggested Answer







Actual exam question from Microsoft's AI-900

Question #: 97

Topic #: 1

[\[All AI-900 Questions\]](#)

---

You need to build an app that will read recipe instructions aloud to support users who have reduced vision.

Which version service should you use?

- A. Text Analytics
- B. Translator
- C. Speech
- D. Language Understanding (LUIS)

Show Suggested Answer



Actual exam question from Microsoft's AI-900

Question #: 98

Topic #: 1

[\[All AI-900 Questions\]](#)

HOTSPOT -

For each of the following statements, select Yes if the statement is true. Otherwise, select No.

NOTE: Each correct selection is worth one point.

Hot Area:

### Answer Area

Statements	Yes	No
You can use the Speech service to transcribe a call to text.	<input type="radio"/>	<input type="radio"/>
You can use the Text Analytics service to extract key entities from a call transcript.	<input type="radio"/>	<input type="radio"/>
You can use the Speech service to translate the audio of a call to a different language.	<input type="radio"/>	<input type="radio"/>

Show Suggested Answer





Actual exam question from Microsoft's AI-900

Question #: 99

Topic #: 1

[\[All AI-900 Questions\]](#)

---

Your website has a chatbot to assist customers.

You need to detect when a customer is upset based on what the customer types in the chatbot.

Which type of AI workload should you use?

- A. anomaly detection
- B. computer vision
- C. regression
- D. natural language processing

Show Suggested Answer





Actual exam question from Microsoft's AI-900

Question #: 100

Topic #: 1

[\[All AI-900 Questions\]](#)

---

You plan to develop a bot that will enable users to query a knowledge base by using natural language processing.

Which two services should you include in the solution? Each correct answer presents part of the solution.

NOTE: Each correct selection is worth one point.

- A. QnA Maker
- B. Azure Bot Service
- C. Form Recognizer
- D. Anomaly Detector

Show Suggested Answer





Actual exam question from Microsoft's AI-900

Question #: 101

Topic #: 1

[\[All AI-900 Questions\]](#)

---

In which two scenarios can you use a speech synthesis solution? Each correct answer presents a complete solution.

NOTE: Each correct selection is worth one point.

- A. an automated voice that reads back a credit card number entered into a telephone by using a numeric keypad
- B. generating live captions for a news broadcast
- C. extracting key phrases from the audio recording of a meeting
- D. an AI character in a computer game that speaks audibly to a player

Show Suggested Answer



Actual exam question from Microsoft's AI-900

Question #: 102

Topic #: 1

[\[All AI-900 Questions\]](#)

HOTSPOT -

For each of the following statements, select Yes if the statement is true. Otherwise, select No.

NOTE: Each correct selection is worth one point.

Hot Area:

### Answer Area

Statements	Yes	No
You can use the Translator service to translate text between languages.	<input type="radio"/>	<input type="radio"/>
You can use the Translator service to detect the language of a given text.	<input type="radio"/>	<input type="radio"/>
You can use the Translator service to transcribe audible speech into text.	<input type="radio"/>	<input type="radio"/>

Show Suggested Answer



Actual exam question from Microsoft's AI-900

Question #: 103

Topic #: 1

[\[All AI-900 Questions\]](#)

DRAG DROP -

You need to scan the news for articles about your customers and alert employees when there is a negative article. Positive articles must be added to a press book. Which natural language processing tasks should you use to complete the process? To answer, drag the appropriate tasks to the correct locations. Each task may be used once, more than once, or not at all. You may need to drag the split bar between panes or scroll to view content.

NOTE: Each correct selection is worth one point.

Select and Place:

#### Tasks

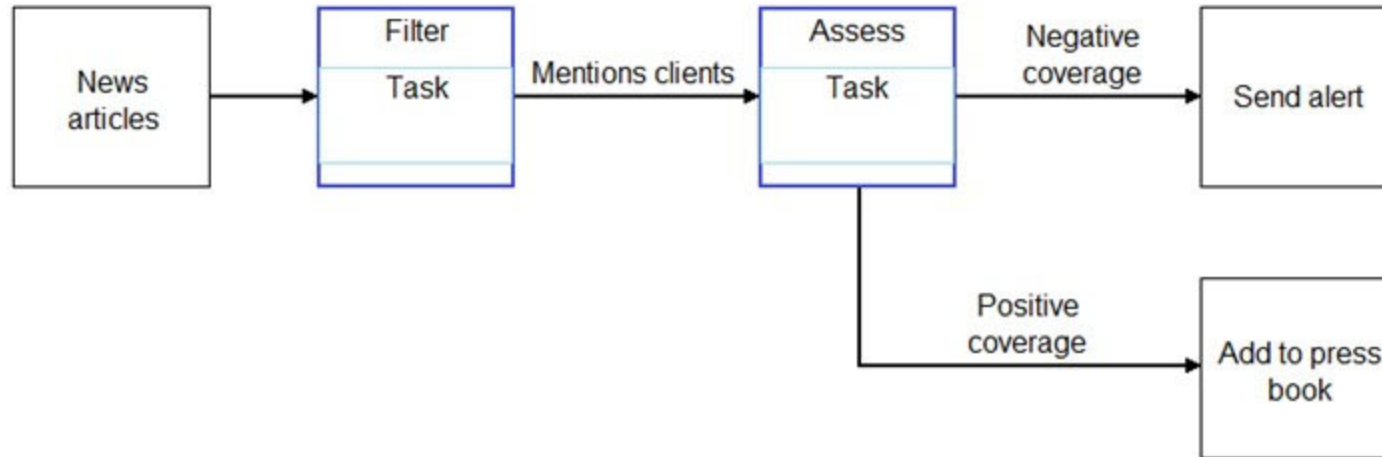
Entity recognition

Sentiment analysis

Speech synthesis

Translation

#### Answer Area



Show Suggested Answer



Actual exam question from Microsoft's AI-900

Question #: 104

Topic #: 1

[\[All AI-900 Questions\]](#)

---

You are building a knowledge base by using QnA Maker.

Which file format can you use to populate the knowledge base?

- A. PPTX
- B. XML
- C. ZIP
- D. PDF

Show Suggested Answer







Actual exam question from Microsoft's AI-900

Question #: 105

Topic #: 1

[\[All AI-900 Questions\]](#)

---

In which scenario should you use key phrase extraction?

- A. identifying whether reviews of a restaurant are positive or negative
- B. generating captions for a video based on the audio track
- C. identifying which documents provide information about the same topics
- D. translating a set of documents from English to German

Show Suggested Answer





Actual exam question from Microsoft's AI-900

Question #: 106

Topic #: 1

[\[All AI-900 Questions\]](#)

---

You have insurance claim reports that are stored as text.

You need to extract key terms from the reports to generate summaries.

Which type of AI workload should you use?

- A. natural language processing
- B. conversational AI
- C. anomaly detection
- D. computer vision

Show Suggested Answer



Actual exam question from Microsoft's AI-900

Question #: 107

Topic #: 1

[\[All AI-900 Questions\]](#)

HOTSPOT -

To complete the sentence, select the appropriate option in the answer area.

Hot Area:

**Answer Area**

Natural language processing can be used to

	▼
classify email messages as work-related or personal.	
predict the number of future car rentals.	
predict which website visitors will make a transaction.	
stop a process in a factory when extremely high temperatures are registered.	

Show Suggested Answer





Actual exam question from Microsoft's AI-900

Question #: 108

Topic #: 1

[\[All AI-900 Questions\]](#)

---

Which AI service can you use to interpret the meaning of a user input such as `Call me back later?`

- A. Translator
- B. Text Analytics
- C. Speech
- D. Language Understanding (LUIS)

Show Suggested Answer





Actual exam question from Microsoft's AI-900

Question #: 109

Topic #: 1

[\[All AI-900 Questions\]](#)

---

You are developing a chatbot solution in Azure.

Which service should you use to determine a user's intent?

- A. Translator
- B. QnA Maker
- C. Speech
- D. Language Understanding (LUIS)

[Show Suggested Answer](#)





Actual exam question from Microsoft's AI-900

Question #: 110

Topic #: 1

[\[All AI-900 Questions\]](#)

---

You need to make the written press releases of your company available in a range of languages.

Which service should you use?

- A. Translator
- B. Text Analytics
- C. Speech
- D. Language Understanding (LUIS)

[Show Suggested Answer](#)



Actual exam question from Microsoft's AI-900

Question #: 111

Topic #: 1

[\[All AI-900 Questions\]](#)

HOTSPOT -

For each of the following statements, select Yes if the statement is true. Otherwise, select No.

NOTE: Each correct selection is worth one point.

Hot Area:

### Answer Area

Statements	Yes	No
The Text Analytics service can identify in which language text is written.	<input type="radio"/>	<input type="radio"/>
The Text Analytics service can detect handwritten signatures in a document.	<input type="radio"/>	<input type="radio"/>
The Text Analytics service can identify companies and organizations mentioned in a document.	<input type="radio"/>	<input type="radio"/>

Show Suggested Answer





Actual exam question from Microsoft's AI-900

Question #: 112

Topic #: 1

[\[All AI-900 Questions\]](#)

DRAG DROP -

Match the types of natural languages processing workloads to the appropriate scenarios.

To answer, drag the appropriate workload type from the column on the left to its scenario on the right. Each workload type may be used once, more than once, or not at all.

NOTE: Each correct selection is worth one point.

Select and Place:

### Workloads Types

Entity recognition

Key phrase extraction

Language modeling

Sentiment analysis

Translation

Speech recognition and speech synthesis

### Answer Area

Workload Type

Extracts persons, locations, and organizations from the text

Workload Type

Evaluates text along a positive-negative scale

Workload Type

Converts text to a different language

Show Suggested Answer





Actual exam question from Microsoft's AI-900

Question #: 113

Topic #: 1

[\[All AI-900 Questions\]](#)

HOTSPOT -

For each of the following statements, select Yes if the statement is true. Otherwise, select No.

NOTE: Each correct selection is worth one point.

Hot Area:

### Answer Area

Statements	Yes	No
Monitoring online service reviews for profanities is an example of natural language processing.	<input type="radio"/>	<input type="radio"/>
Identifying brand logos in an image is an example of natural languages processing.	<input type="radio"/>	<input type="radio"/>
Monitoring public news sites for negative mentions of a product is an example of natural language processing.	<input type="radio"/>	<input type="radio"/>

Show Suggested Answer





Actual exam question from Microsoft's AI-900

Question #: 114

Topic #: 1

[\[All AI-900 Questions\]](#)

---

You are developing a natural language processing solution in Azure. The solution will analyze customer reviews and determine how positive or negative each review is. This is an example of which type of natural language processing workload?

- A. language detection
- B. sentiment analysis
- C. key phrase extraction
- D. entity recognition

Show Suggested Answer



Actual exam question from Microsoft's AI-900

Question #: 115

Topic #: 1

[\[All AI-900 Questions\]](#)

You use natural language processing to process text from a Microsoft news story.

You receive the output shown in the following exhibit.

For weeks now, students and teachers have been settling into the uncharted routine of distance learning. Today I want to thank all of the educators who are connecting classrooms and classmates together in the sudden shift to remote learning. This change requires everyone working together and is unlike anything we've seen in the modern history of education. We've seen countries, school districts and universities move rapidly into remote learning environments with Microsoft Teams being used in 175 countries by 183,000 institutions.



now [DateTime]  
students [PersonType]  
teachers [PersonType]  
distance learning [Skill]  
Today [DateTime-Date]  
educators [PersonType]  
classrooms [Location]  
classmates [PersonType]  
remote learning [Skill]  
history [Skill]  
education [Skill]  
remote learning [Skill]  
Microsoft [Organization]  
175 [Quantity-Number]  
183,000 [Quantity-Number]

Which type of natural languages processing was performed?

- A. entity recognition
- B. key phrase extraction
- C. sentiment analysis
- D. translation

Show Suggested Answer

Actual exam question from Microsoft's AI-900

Question #: 116

Topic #: 1

[\[All AI-900 Questions\]](#)

DRAG DROP -

You plan to apply Text Analytics API features to a technical support ticketing system.

Match the Text Analytics API features to the appropriate natural language processing scenarios.

To answer, drag the appropriate feature from the column on the left to its scenario on the right. Each feature may be used once, more than once, or not at all.

NOTE: Each correct selection is worth one point.

Select and Place:

#### API Features

Entity recognition

Key phrase extraction

Language detection

Sentiment analysis

#### Answer Area

API Feature

Understand how upset a customer is based on the text contained in the support ticket.

API Feature

Summarize important information from the support ticket.

API Feature

Extract key dates from the support ticket.

Show Suggested Answer



Actual exam question from Microsoft's AI-900

Question #: 117

Topic #: 1

[\[All AI-900 Questions\]](#)

---

You are authoring a Language Understanding (LUIS) application to support a music festival.

You want users to be able to ask questions about scheduled shows, such as: `Which act is playing on the main stage?`

The question `Which act is playing on the main stage?` is an example of which type of element?

- A. an intent
- B. an utterance
- C. a domain
- D. an entity

Show Suggested Answer



Actual exam question from Microsoft's AI-900

Question #: 118

Topic #: 1

[\[All AI-900 Questions\]](#)

---

You build a QnA Maker bot by using a frequently asked questions (FAQ) page.

You need to add professional greetings and other responses to make the bot more user friendly.

What should you do?

- A. Increase the confidence threshold of responses
- B. Enable active learning
- C. Create multi-turn questions
- D. Add chit-chat

Show Suggested Answer





Actual exam question from Microsoft's AI-900

Question #: 119

Topic #: 1

[\[All AI-900 Questions\]](#)

---

You need to develop a chatbot for a website. The chatbot must answer users' questions based on the information in the following documents:

- ⇒ A product troubleshooting guide in a Microsoft Word document
- ⇒ A frequently asked questions (FAQ) list on a webpage

Which service should you use to process the documents?

- A. Azure Bot Service
- B. Language Understanding
- C. Text Analytics
- D. QnA Maker

Show Suggested Answer





Actual exam question from Microsoft's AI-900

Question #: 120

Topic #: 1

[\[All AI-900 Questions\]](#)

---

You are building a Language Understanding model for an e-commerce business.

You need to ensure that the model detects when utterances are outside the intended scope of the model.

What should you do?

- A. Test the model by using new utterances
- B. Add utterances to the None intent
- C. Create a prebuilt task entity
- D. Create a new model

Show Suggested Answer







Actual exam question from Microsoft's AI-900

Question #: 121

Topic #: 1

[\[All AI-900 Questions\]](#)

---

Which two scenarios are examples of a natural language processing workload? Each correct answer presents a complete solution.

NOTE: Each correct selection is worth one point.

- A. monitoring the temperature of machinery to turn on a fan when the temperature reaches a specific threshold
- B. a smart device in the home that responds to questions such as, "What will the weather be like today?"
- C. a website that uses a knowledge base to interactively respond to users' questions
- D. assembly line machinery that autonomously inserts headlamps into cars

Show Suggested Answer





Actual exam question from Microsoft's AI-900

Question #: 122

Topic #: 1

[\[All AI-900 Questions\]](#)

---

You have an AI solution that provides users with the ability to control smart devices by using verbal commands.

Which two types of natural language processing (NLP) workloads does the solution use? Each correct answer presents part of the solution.

NOTE: Each correct selection is worth one point.

- A. text-to-speech
- B. key phrase extraction
- C. speech-to-text
- D. language modeling
- E. translation

Show Suggested Answer



Actual exam question from Microsoft's AI-900

Question #: 123

Topic #: 1

[\[All AI-900 Questions\]](#)

HOTSPOT -

For each of the following statements, select Yes if the statement is true. Otherwise, select No.

NOTE: Each correct selection is worth one point.

Hot Area:

### Answer Area

Statements	Yes	No
The Language service can identify in which language text is written.	<input type="radio"/>	<input type="radio"/>
The Language service can detect handwritten signatures in a document.	<input type="radio"/>	<input type="radio"/>
The Language service can identify companies and organizations mentioned in a document.	<input type="radio"/>	<input type="radio"/>

Show Suggested Answer



Actual exam question from Microsoft's AI-900

Question #: 124

Topic #: 1

[\[All AI-900 Questions\]](#)

DRAG DROP -

You plan to use Azure Cognitive Services to develop a voice controlled personal assistant app.

Match the Azure Cognitive Services to the appropriate tasks.

To answer, drag the appropriate service from the column on the left to its description on the right. Each service may be used once, more than once, or not at all.

NOTE: Each correct selection is worth one point.

Select and Place:

### Services

Speech

Language service

Translator Text

### Answer Area

Convert a user's speech to text

Identify a user's intent

Provide a spoken response to the user

Show Suggested Answer



Actual exam question from Microsoft's AI-900

Question #: 125

Topic #: 1

[\[All AI-900 Questions\]](#)

---

You need to make the written press releases of your company available in a range of languages.

Which service should you use?

- A. Speech
- B. Language
- C. Translator
- D. Personalizer

[Show Suggested Answer](#)





Actual exam question from Microsoft's AI-900

Question #: 126

Topic #: 1

[\[All AI-900 Questions\]](#)

---

You have insurance claim reports that are stored as text.

You need to extract key terms from the reports to generate summaries.

Which type of AI workload should you use?

- A. anomaly detection
- B. natural language processing
- C. computer vision
- D. knowledge mining

Show Suggested Answer





Actual exam question from Microsoft's AI-900

Question #: 127

Topic #: 1

[\[All AI-900 Questions\]](#)

---

You need to build an app that will read recipe instructions aloud to support users who have reduced vision.

Which version service should you use?

- A. Language service
- B. Translator
- C. Speech
- D. Personalizer

[Show Suggested Answer](#)





Actual exam question from Microsoft's AI-900

Question #: 128

Topic #: 1

[\[All AI-900 Questions\]](#)

---

You have a webchat bot that provides responses from a QnA Maker knowledge base.

You need to ensure that the bot uses user feedback to improve the relevance of the responses over time.

What should you use?

- A. key phrase extraction
- B. sentiment analysis
- C. business logic
- D. active learning

Show Suggested Answer







Actual exam question from Microsoft's AI-900

Question #: 129

Topic #: 1

[\[All AI-900 Questions\]](#)

---

You are developing a conversational AI solution that will communicate with users through multiple channels including email, Microsoft Teams, and webchat. Which service should you use?

- A. Text Analytics
- B. Azure Bot Service
- C. Translator
- D. Form Recognizer

[Show Suggested Answer](#)



Actual exam question from Microsoft's AI-900

Question #: 130

Topic #: 1

[\[All AI-900 Questions\]](#)

HOTSPOT -

For each of the following statements, select Yes if the statement is true. Otherwise, select No.

NOTE: Each correct selection is worth one point.

Hot Area:

## Answer Area

Statements	Yes	No
A bot that responds to queries by internal users is an example of a conversational AI workload.	<input type="radio"/>	<input type="radio"/>
An application that displays images relating to an entered search term is an example of a conversational AI workload.	<input type="radio"/>	<input type="radio"/>
A web form used to submit a request to reset a password is an example of a conversational AI workload.	<input type="radio"/>	<input type="radio"/>

Show Suggested Answer





Actual exam question from Microsoft's AI-900

Question #: 131

Topic #: 1

[\[All AI-900 Questions\]](#)

---

You need to provide content for a business chatbot that will help answer simple user queries.

What are three ways to create question and answer text by using QnA Maker? Each correct answer presents a complete solution.

NOTE: Each correct selection is worth one point.

- A. Generate the questions and answers from an existing webpage.
- B. Use automated machine learning to train a model based on a file that contains the questions.
- C. Manually enter the questions and answers.
- D. Connect the bot to the Cortana channel and ask questions by using Cortana.
- E. Import chit-chat content from a predefined data source.

Show Suggested Answer





Actual exam question from Microsoft's AI-900

Question #: 132

Topic #: 1

[\[All AI-900 Questions\]](#)

---

You have a frequently asked questions (FAQ) PDF file.

You need to create a conversational support system based on the FAQ.

Which service should you use?

- A. QnA Maker
- B. Text Analytics
- C. Computer Vision
- D. Language Understanding (LUIS)

Show Suggested Answer





Actual exam question from Microsoft's AI-900

Question #: 133

Topic #: 1

[\[All AI-900 Questions\]](#)

---

You need to reduce the load on telephone operators by implementing a chatbot to answer simple questions with predefined answers.

Which two AI service should you use to achieve the goal? Each correct answer presents part of the solution.

NOTE: Each correct selection is worth one point.

- A. Text Analytics
- B. QnA Maker
- C. Azure Bot Service
- D. Translator

Show Suggested Answer





Actual exam question from Microsoft's AI-900

Question #: 134

Topic #: 1

[\[All AI-900 Questions\]](#)

---

Which two scenarios are examples of a conversational AI workload? Each correct answer presents a complete solution.

NOTE: Each correct selection is worth one point.

- A. a smart device in the home that responds to questions such as "What will the weather be like today?"
- B. a website that uses a knowledge base to interactively respond to users' questions
- C. assembly line machinery that autonomously inserts headlamps into cars
- D. monitoring the temperature of machinery to turn on a fan when the temperature reaches a specific threshold

Show Suggested Answer



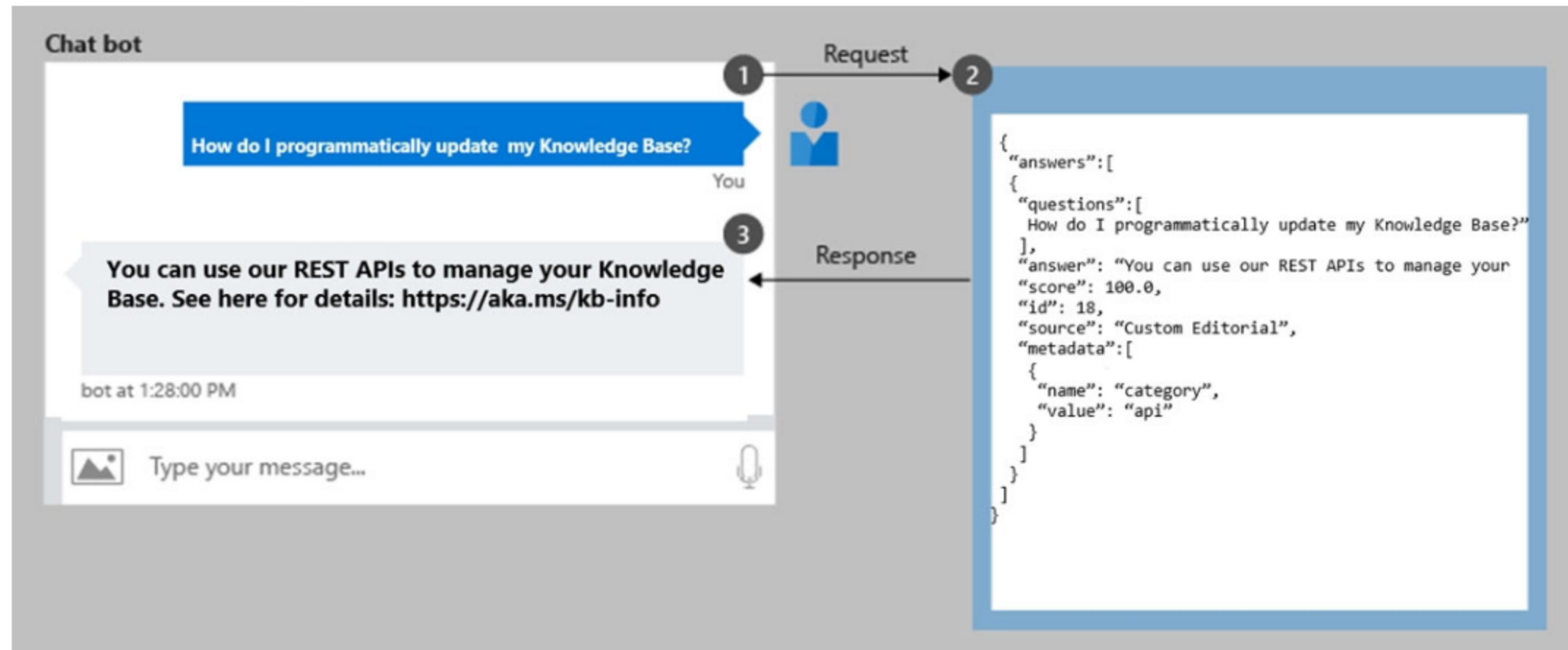
Actual exam question from Microsoft's AI-900

Question #: 135

Topic #: 1

[\[All AI-900 Questions\]](#)

You have the process shown in the following exhibit.



Which type of AI solution is shown in the diagram?

- A. a sentiment analysis solution
- B. a chatbot
- C. a machine learning model
- D. a computer vision application

Show Suggested Answer



Actual exam question from Microsoft's AI-900

Question #: 136

Topic #: 1

[\[All AI-900 Questions\]](#)

---

You need to develop a web-based AI solution for a customer support system. Users must be able to interact with a web app that will guide them to the best resource or answer.

Which service should you use?

- A. Custom Vision
- B. QnA Maker
- C. Translator Text
- D. Face

Show Suggested Answer







Actual exam question from Microsoft's AI-900

Question #: 137

Topic #: 1

[\[All AI-900 Questions\]](#)

---

Which AI service should you use to create a bot from a frequently asked questions (FAQ) document?

- A. QnA Maker
- B. Language Understanding (LUIS)
- C. Text Analytics
- D. Speech

Show Suggested Answer





Actual exam question from Microsoft's AI-900

Question #: 138

Topic #: 1

[\[All AI-900 Questions\]](#)

HOTSPOT -

To complete the sentence, select the appropriate option in the answer area.

Hot Area:

### Answer Area

The interactive answering of questions entered by a user as part of an application is an example of

	▼
anomaly detection.	
computer vision.	
conversational AI.	
forecasting.	

Show Suggested Answer





Actual exam question from Microsoft's AI-900

Question #: 139

Topic #: 1

[\[All AI-900 Questions\]](#)

---

Which scenario is an example of a webchat bot?

- A. Determine whether reviews entered on a website for a concert are positive or negative, and then add a thumbs up or thumbs down emoji to the reviews.
- B. Translate into English questions entered by customers at a kiosk so that the appropriate person can call the customers back.
- C. Accept questions through email, and then route the email messages to the correct person based on the content of the message.
- D. From a website interface, answer common questions about scheduled events and ticket purchases for a music festival.

Show Suggested Answer



Actual exam question from Microsoft's AI-900

Question #: 140

Topic #: 1

[\[All AI-900 Questions\]](#)

HOTSPOT -

For each of the following statements, select Yes if the statement is true. Otherwise, select No.

NOTE: Each correct selection is worth one point.

Hot Area:

### Answer Area

Statements	Yes	No
You can use QnA Maker to query an Azure SQL database.	<input type="radio"/>	<input type="radio"/>
You should use QnA Maker when you want a knowledge base to provide the same answer to different users who submit similar questions.	<input type="radio"/>	<input type="radio"/>
The QnA Maker service can determine the intent of a user utterance.	<input type="radio"/>	<input type="radio"/>

Show Suggested Answer



Actual exam question from Microsoft's AI-900

Question #: 141

Topic #: 1

[\[All AI-900 Questions\]](#)

HOTSPOT -

For each of the following statements, select Yes if the statement is true. Otherwise, select No.

NOTE: Each correct selection is worth one point.

Hot Area:

### Answer Area

Statements	Yes	No
You can communicate with a bot by using Cortana.	<input type="radio"/>	<input type="radio"/>
You can communicate with a bot by using Microsoft Teams.	<input type="radio"/>	<input type="radio"/>
You can communicate with a bot by using a webchat interface.	<input type="radio"/>	<input type="radio"/>

Show Suggested Answer



Actual exam question from Microsoft's AI-900

Question #: 142

Topic #: 1

[\[All AI-900 Questions\]](#)

HOTSPOT -

For each of the following statements, select Yes if the statement is true. Otherwise, select No.

NOTE: Each correct selection is worth one point.

Hot Area:

## Answer Area

Statements	Yes	No
A restaurant can use a chatbot to empower customers to make reservations by using a website or an app.	<input type="radio"/>	<input type="radio"/>
A restaurant can use a chatbot to answer inquiries about business hours from a webpage.	<input type="radio"/>	<input type="radio"/>
A restaurant can use a chatbot to automate responses to customer reviews on an external website.	<input type="radio"/>	<input type="radio"/>

Show Suggested Answer





Actual exam question from Microsoft's AI-900

Question #: 143

Topic #: 1

[\[All AI-900 Questions\]](#)

---

Which two scenarios are examples of a conversational AI workload? Each correct answer presents a complete solution.

NOTE: Each correct selection is worth one point.

- A. a telephone answering service that has a pre-recorder message
- B. a chatbot that provides users with the ability to find answers on a website by themselves
- C. telephone voice menus to reduce the load on human resources
- D. a service that creates frequently asked questions (FAQ) documents by crawling public websites

Show Suggested Answer



Actual exam question from Microsoft's AI-900

Question #: 144

Topic #: 1

[\[All AI-900 Questions\]](#)

HOTSPOT -

For each of the following statements, select Yes if the statement is true. Otherwise, select No.

NOTE: Each correct selection is worth one point.

Hot Area:

### Answer Area

Statements	Yes	No
Azure Bot Service and Azure Cognitive Services can be integrated.	<input type="radio"/>	<input type="radio"/>
Azure Bot Service engages with customers in a conversational manner.	<input type="radio"/>	<input type="radio"/>
Azure Bot Service can import frequently asked questions (FAQ) to question and answer sets.	<input type="radio"/>	<input type="radio"/>

Show Suggested Answer





Actual exam question from Microsoft's AI-900

Question #: 145

Topic #: 1

[\[All AI-900 Questions\]](#)

HOTSPOT -

For each of the following statements, select Yes if the statement is true. Otherwise, select No.

NOTE: Each correct selection is worth one point.

Hot Area:

## Answer Area

Statements	Yes	No
A webchat bot can interact with users visiting a website	<input type="radio"/>	<input type="radio"/>
Automatically generating captions for pre-recorded videos is an example of conversational AI	<input type="radio"/>	<input type="radio"/>
A smart device in the home that responds to questions such as "What will the weather like today?" is an example of conversational AI	<input type="radio"/>	<input type="radio"/>

Show Suggested Answer





Actual exam question from Microsoft's AI-900

Question #: 146

Topic #: 1

[\[All AI-900 Questions\]](#)

---

You have a knowledge base of frequently asked questions (FAQ).

You create a bot that uses the knowledge base to respond to customer requests.

You need to identify what the bot can perform without adding additional skills.

What should you identify?

- A. Register customer purchases.
- B. Register customer complaints.
- C. Answer questions from multiple users simultaneously.
- D. Provide customers with return materials authorization (RMA) numbers.

Show Suggested Answer



Actual exam question from Microsoft's AI-900

Question #: 147

Topic #: 1

[\[All AI-900 Questions\]](#)

HOTSPOT -

For each of the following statements, select Yes if the statement is true. Otherwise, select No.

NOTE: Each correct selection is worth one point.

Hot Area:

### Answer Area

Statements	Yes	No
A restaurant can use a chatbot to answer queries through Cortana.	<input type="radio"/>	<input type="radio"/>
A restaurant can use a chatbot to answer inquiries about business hours from a webpage.	<input type="radio"/>	<input type="radio"/>
A restaurant can use a chatbot to automate responses to customer reviews on an external website.	<input type="radio"/>	<input type="radio"/>

Show Suggested Answer



Actual exam question from Microsoft's AI-900

Question #: 148

Topic #: 1

[\[All AI-900 Questions\]](#)

HOTSPOT -

For each of the following statements, select Yes if the statement is true. Otherwise, select No.

NOTE: Each correct selection is worth one point.

Hot Area:

### Answer Area

#### Statements

Chatbots can only be built by using custom code.

Yes

No

The Azure Bot Service provides services that can be used to host conversational bots.

Bots built by using the Azure Bot Service can communicate with Microsoft Teams users.

Show Suggested Answer



Actual exam question from Microsoft's AI-900

Question #: 149

Topic #: 1

[\[All AI-900 Questions\]](#)

HOTSPOT -

Select the answer that correctly completes the sentence.

Hot Area:

**Answer Area**

Computer vision capabilities can be deployed to

develop a text-based chatbot for a website.

identify anomalous customer behavior on an online store.

integrate a facial recognition feature into an app.

suggest automated responses to incoming email.

Show Suggested Answer



Actual exam question from Microsoft's AI-900

Question #: 150

Topic #: 1

[\[All AI-900 Questions\]](#)

---

You have an Azure Machine Learning pipeline that contains a Split Data module.  
The Split Data module outputs to a Train Model module and a Score Model module.  
What is the function of the Split Data module?

- A. scaling numeric variables so that they are within a consistent numeric range
- B. creating training and validation datasets
- C. diverting records that have missing data
- D. selecting columns that must be included in the model

Show Suggested Answer





Actual exam question from Microsoft's AI-900

Question #: 151

Topic #: 1

[\[All AI-900 Questions\]](#)

---

Which statement is an example of a Microsoft responsible AI principle?

- A. AI systems must use only publicly available data
- B. AI systems must be transparent and inclusive
- C. AI systems must keep personal details public
- D. AI systems must protect the interests of the company

Show Suggested Answer



Actual exam question from Microsoft's AI-900

Question #: 152

Topic #: 1

[\[All AI-900 Questions\]](#)

DRAG DROP -

Match the types of natural language processing workloads to the appropriate scenarios.

To answer, drag the appropriate workload type from the column on the left to its scenario on the right. Each workload type may be used once, more than once, or not at all.

NOTE: Each correct match is worth one point.

Select and Place:

### Workload types

Entity recognition

Key phrase extraction

Language modeling

Sentiment analysis

Speech recognition and speech synthesis

Translation

### Answer Area

Extracts persons, locations, and organizations from the text.

Evaluates text along a positive-negative scale.

Converts text to a different language.

Show Suggested Answer







Actual exam question from Microsoft's AI-900

Question #: 153

Topic #: 1

[\[All AI-900 Questions\]](#)

---

You need to reduce the load on telephone operators by implementing a chatbot to answer simple questions with predefined answers.

Which two AI services should you use to achieve the goal? Each correct answers presents part of the solution.

NOTE: Each correct selection is worth one point.

- A. Azure Machine Learning
- B. Azure Bot Service
- C. Language Service
- D. Translator

Show Suggested Answer



Actual exam question from Microsoft's AI-900

Question #: 154

Topic #: 1

[\[All AI-900 Questions\]](#)

DRAG DROP

Match the principles of responsible AI to the appropriate descriptions.

To answer, drag the appropriate principle from the column on the left to its description on the right. Each principle may be used once, more than once, or not at all. You may need to drag the split bar between panes or scroll to view content.

NOTE: Each correct selection is worth one point.

#### Principles

Fairness

Inclusiveness

Privacy and security

Reliability and safety

#### Answer Area

AI systems must consistently operate as intended, even under unexpected conditions.

AI systems must protect and secure personal and businesses information.

Show Suggested Answer





Actual exam question from Microsoft's AI-900

Question #: 155

Topic #: 1

[\[All AI-900 Questions\]](#)

---

During the process of Machine Learning, when should you review evaluation metrics.

- A. Before you train a model.
- B. After you clean the data.
- C. Before you choose the type of model.
- D. After you test a model on the validation data.

Show Suggested Answer





Actual exam question from Microsoft's AI-900

Question #: 156

Topic #: 1

[\[All AI-900 Questions\]](#)

---

You have a natural language processing (NLP) model that was created by using data obtained without permission.

Which Microsoft principle for responsible AI does this breach?

- A. reliability and safety
- B. privacy and security
- C. inclusiveness
- D. transparency

Show Suggested Answer



Actual exam question from Microsoft's AI-900

Question #: 157

Topic #: 1

[\[All AI-900 Questions\]](#)

HOTSPOT

-

Select the answer that correctly completes the sentence.

### Answer Area

Ensuring an AI system does not provide a prediction when important fields contain unusual or missing values is  principle for responsible AI.

- an inclusiveness
- a privacy and security
- a reliability and safety
- a transparency

Show Suggested Answer

Actual exam question from Microsoft's AI-900

Question #: 158

Topic #: 1

[\[All AI-900 Questions\]](#)

DRAG DROP

-

Match the services to the appropriate descriptions.

To answer, drag the appropriate service from the column on the left to its description on the right. Each service may be used once, more than once, or not at all. You may need to drag the split bar between panes or scroll to view content.

NOTE: Each correct selection is worth one point.

Services	Answer Area
Azure Storage	
Azure Bot Service	Enables the use of natural language to query a knowledge base.
Language Service	Enables the real-time transcription of speech-to-text.
Speech	

Show Suggested Answer





Actual exam question from Microsoft's AI-900

Question #: 159

Topic #: 1

[\[All AI-900 Questions\]](#)

---

Which machine learning technique can be used for anomaly detection?

- A. A machine learning technique that classifies objects based on user supplied images.
- B. A machine learning technique that understands written and spoken language.
- C. A machine learning technique that classifies images based on their contents.
- D. A machine learning technique that analyzes data over time and identifies unusual changes.

Show Suggested Answer





Actual exam question from Microsoft's AI-900

Question #: 160

Topic #: 1

[\[All AI-900 Questions\]](#)

---

You have an AI-based loan approval system.

During testing, you discover that the system has a gender bias.

Which responsible AI principle does this violate?

- A. accountability
- B. reliability and safety
- C. transparency
- D. fairness

Show Suggested Answer







Actual exam question from Microsoft's AI-900

Question #: 161

Topic #: 1

[\[All AI-900 Questions\]](#)

---

You are developing a system to predict the prices of insurance for drivers in the United Kingdom.

You need to minimize bias in the system.

What should you do?

- A. Remove information about protected characteristics from the data before sampling.
- B. Take a training sample that is representative of the population in the United Kingdom.
- C. Create a training dataset that uses data from global insurers.
- D. Take a completely random training sample.

Show Suggested Answer



Actual exam question from Microsoft's AI-900

Question #: 162

Topic #: 1

[\[All AI-900 Questions\]](#)

HOTSPOT

Select the answer that correctly completes the sentence.

**Answer Area**

Azure Machine Learning designer lets you create machine learning models by

- adding and connecting modules on a visual canvas.
- automatically performing common data preparation tasks.
- automatically selecting an algorithm to build the most accurate model.
- using a code-first notebook experience.

Show Suggested Answer



Actual exam question from Microsoft's AI-900

Question #: 163

Topic #: 1

[\[All AI-900 Questions\]](#)

---

You have a dataset.

You need to build an Azure Machine Learning classification model that will identify defective products.

What should you do first?

- A. Load the dataset.
- B. Create a clustering model.
- C. Split the data into training and testing datasets.
- D. Create a classification model.

Show Suggested Answer





Actual exam question from Microsoft's AI-900

Question #: 164

Topic #: 1

[\[All AI-900 Questions\]](#)

---

You use Azure Machine Learning designer to build a model pipeline.

What should you create before you can run the pipeline?

- A. a registered model
- B. a compute resource
- C. a Jupyter notebook

[Show Suggested Answer](#)

