



Actual exam question from VMware's 2V0-51.19

Question #: 1

Topic #: 1

[\[All 2V0-51.19 Questions\]](#)

Which are two custom setup options when installing VMware Horizon Agent on a master image? (Choose two.)

- A. USB Redirection
- B. Windows Media Multimedia Redirection
- C. VMWare Horizon Instant Clone Agent
- D. Unity Touch

Show Suggested Answer



Actual exam question from VMware's 2V0-51.19

Question #: 2

Topic #: 1

[\[All 2V0-51.19 Questions\]](#)

An administrator connects to View Administrator and sees that the dashboard health indicator is red for the View Connection Server instance.

Clicking the red health indicator displays SSL Certificate: Invalid

What setting should the administrator review when troubleshooting this issue?

- A. Verify that the certificate is added to the certificate authority's revocation list
- B. Verify that the certificate has a friendly name of view
- C. Verify that the certificate is imported into the Personal folder in the Microsoft Windows local computer certificate store
- D. Verify that the SSL service is running on the View Connection Server instance

Show Suggested Answer





Actual exam question from VMware's 2V0-51.19

Question #: 3

Topic #: 1

[\[All 2V0-51.19 Questions\]](#)

What is the effect of changing any VMware Blast policy that cannot be changed in real time?

- A. VMware Tools services is restarted by Microsoft GPO Update service
- B. Microsoft GPO update rules apply. GPOs are updated manually or by restarting the Horizon Agent
- C. VMware Tools detects the change and immediately applies the new setting within 480 seconds
- D. Horizon Client detects the change and prompts the user to reboot once every 480 seconds

Show Suggested Answer





Actual exam question from VMware's 2V0-51.19

Question #: 4

Topic #: 1

[\[All 2V0-51.19 Questions\]](#)

What is the default behavior for AppVolumes drive letter assignments?

- A. For writable volumes the drive letter is hidden, and for AppStack volumes the drive letter is not assigned
- B. Drive letters are not assigned for both AppStack and writable volumes
- C. For writable volumes the driver letter is not assigned, and for AppStack volumes the drive letter is hidden
- D. Drive letters are assigned and hidden for both AppStack and writable volumes

Show Suggested Answer





Actual exam question from VMware's 2V0-51.19

Question #: 5

Topic #: 1

[\[All 2V0-51.19 Questions\]](#)

What is the minimum version of vSphere required to deploy instant clones?

- A. vSphere 5.5
- B. vSphere 6.0 Update 1
- C. vSphere 5.5 Update 3b
- D. vSphere 6.0 Update 2

Show Suggested Answer





Actual exam question from VMware's 2V0-51.19

Question #: 6

Topic #: 1

[\[All 2V0-51.19 Questions\]](#)

The vRealize Operations Manager for VMware Horizon dashboards are all blank except for the Horizon Adapter Self Health dashboard.

What two actions will resolve the issue? (Choose two.)

- A. Add a vRealize Operations for Horizon License Key
- B. Associate Horizon objects with the vRealize Operations for Horizon License Key
- C. Create an instance of the Horizon Adapter
- D. Configure the vRealize Operations for Horizon Broker Agent

Show Suggested Answer





Actual exam question from VMware's 2V0-51.19

Question #: 7

Topic #: 1

[\[All 2V0-51.19 Questions\]](#)

Writable Volumes can be assigned to which three choices? (Choose three.)

- A. VDI Desktops
- B. Groups
- C. RDS Session Hosts
- D. AppStacks
- E. Users

Show Suggested Answer





Actual exam question from VMware's 2V0-51.19

Question #: 8

Topic #: 1

[\[All 2V0-51.19 Questions\]](#)

While investigating slow performance, an administrator discovered that none of the desktops in the Microsoft Windows desktop pool is reporting metrics to vRealize Operations for VMware Horizon.

What action would enable the Microsoft Windows desktop pool to report metrics to vRealize Operations Manager for Horizon?

- A. Verify that the Microsoft Windows desktop pool has been included in the vRealize Operations for Horizon Broker Agent configuration
- B. Enable vRealize Operations Manager for Horizon in the Microsoft Windows desktop pool settings in the View Administrator console
- C. Add the vRealize Operations Manager for Horizon security tag to the Microsoft Windows desktop pool virtual machines
- D. Add the users of the Microsoft Windows desktop pool to the vRealize Operations Manager Everyone group

Show Suggested Answer





Actual exam question from VMware's 2V0-51.19

Question #: 9

Topic #: 1

[\[All 2V0-51.19 Questions\]](#)

Which type of virtual machines can an existing pool contain when cloning an Automated Desktop Pool from an existing pool?

- A. RDS desktops
- B. Manual desktops
- C. Linked clones
- D. Instant clones

[Show Suggested Answer](#)





Actual exam question from VMware's 2V0-51.19

Question #: 10

Topic #: 1

[\[All 2V0-51.19 Questions\]](#)

How many ESXi hosts may receive vSphere Desktop licenses if three 100-seat View Standard bundles are purchased?

- A. An unlimited number of ESXi hosts
- B. Up to three dual-socket ESXi hosts
- C. None; Horizon Standard does not include vSphere Desktop licenses
- D. Up to 150 dual-socket ESXi hosts

Show Suggested Answer





Actual exam question from VMware's 2V0-51.19

Question #: 11

Topic #: 1

[\[All 2V0-51.19 Questions\]](#)

Which two deployment types are available to the administrator when enabling View Applications in VMware Identity Manager? (Choose two.)

- A. Pool-based
- B. User-Activated
- C. Automatic
- D. Manual

[Show Suggested Answer](#)





Actual exam question from VMware's 2V0-51.19

Question #: 12

Topic #: 1

[\[All 2V0-51.19 Questions\]](#)

Which three are valid types of resources that can be integrated with VMware Identity Manager? (Choose three.)

- A. Horizon Flex resources
- B. Web Applications
- C. Citrix-published resources
- D. Microsoft Azure resources
- E. Horizon 7 resources

Show Suggested Answer





Actual exam question from VMware's 2V0-51.19

Question #: 13

Topic #: 1

[\[All 2V0-51.19 Questions\]](#)

What are two View requirements for ThinApp Applications (Choose two.)

- A. Store Microsoft Installation (MSI) packages on a Windows network share
- B. Grant full control permission to the network share
- C. Store Microsoft Installation (MSI) packages on a VMFS datastore
- D. Grant read permission to the network share

Show Suggested Answer



Actual exam question from VMware's 2V0-51.19

Question #: 14

Topic #: 1

[\[All 2V0-51.19 Questions\]](#)

Refer to the exhibit.

RDS Desktop Pools Page Size: 50 <table border="1"><thead><tr><th>Name</th><th>Health</th><th>Sessions</th><th>Connected</th><th>Disconnected</th></tr></thead><tbody><tr><td colspan="5">No data to display</td></tr></tbody></table>	Name	Health	Sessions	Connected	Disconnected	No data to display					Application Pools Page Size: <table border="1"><thead><tr><th>Name</th><th>Health</th><th>Instance Count</th></tr></thead><tbody></tbody></table>	Name	Health	Instance Count
Name	Health	Sessions	Connected	Disconnected										
No data to display														
Name	Health	Instance Count												
RDS Desktop Sessions Configurations: Sized by Workload - Colored by... No Data Available	Application Sessions Configurations: No Data Available													

While using vRealize Operations for VMware Horizon you notice that the Horizon RDS Pools Dashboard displays the message in the exhibit.

What should be done to resolve the issue?

- A. Verify that the vRealize Operations for Horizon Desktops agent is installed on the RDSH servers
- B. Set the RDS Pools Dashboard as the default dashboard
- C. Ensure that RDS licensing has been configured for the RDS servers
- D. Configure the View Events database

Show Suggested Answer

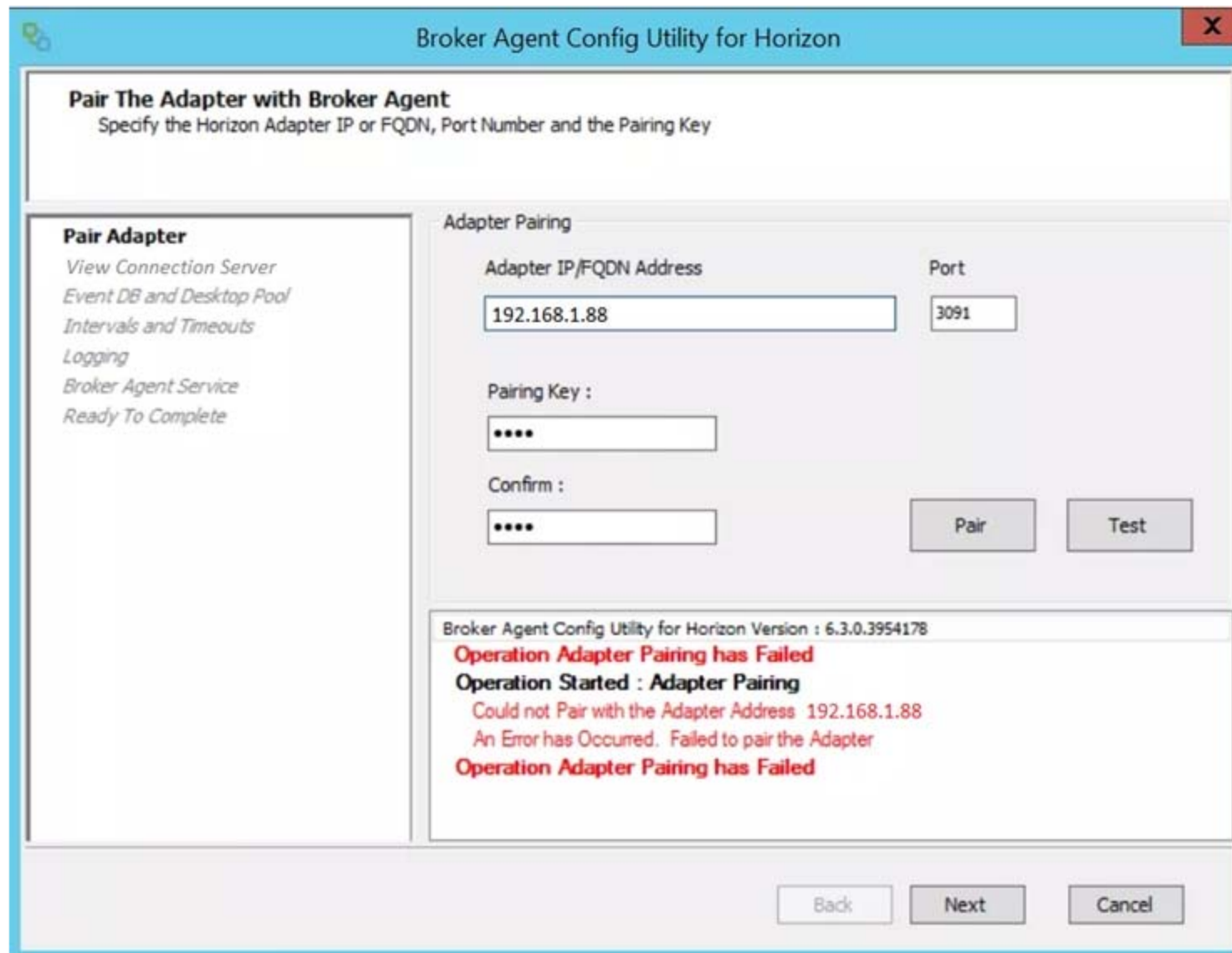
Actual exam question from VMware's 2V0-51.19

Question #: 15

Topic #: 1

[\[All 2V0-51.19 Questions\]](#)

Review the exhibit.



While a View administrator is configuring the vRealize for Horizon Broker Agent, the error message in the exhibit is displayed.

What two actions should the administrator take to resolve the issue? (Choose two.)

- A. Configure the firewall to allow communications
- B. Start the VMware vRealize Operations for Horizon Broker Agent service on the virtual desktops
- C. Verify that the pairing key is correct
- D. Configure DNS to properly resolve the hostnames

Show Suggested Answer



Actual exam question from VMware's 2V0-51.19

Question #: 16

Topic #: 1

[\[All 2V0-51.19 Questions\]](#)

What is the minimum user accounts privilege requirement when installing App Volumes 2.x?

- A. Member of the Domain Users group
- B. Member of the Domain Admins group
- C. Member of the Local Power Users group
- D. Member of the Local Administrators group

[Show Suggested Answer](#)





Actual exam question from VMware's 2V0-51.19

Question #: 17

Topic #: 1

[\[All 2V0-51.19 Questions\]](#)

What is the minimum virtual machine hardware version required to use vGPU?

- A. 12
- B. 9
- C. 10
- D. 11

Show Suggested Answer





Actual exam question from VMware's 2V0-51.19

Question #: 18

Topic #: 1

[\[All 2V0-51.19 Questions\]](#)

Which two vCenter Virtual Machine privileges are required for App Volumes? (Choose two.)

- A. Interaction > Device connection
- B. Configuration > Add or remove device
- C. Configuration > Reload from Path
- D. Inventory > Move

[Show Suggested Answer](#)





Actual exam question from VMware's 2V0-51.19

Question #: 19

Topic #: 1

[\[All 2V0-51.19 Questions\]](#)

An administrator is creating an instant clone pool. During the Add pool wizard process, the Administrator gets to the vCenter Server page, selects Instant Clones and notices that the Next button is grayed out.

- A. The administrator does not have sufficient privileges
- B. In the wizard, the Administrator must click on the desired vCenter server in the vCenter Server section
- C. The administrator must open PowerCLI, issue the cmdlet `mkfs -t ext3 /"My Folder"/"My Disks"` to add additional space
- D. The VMware View Connection Server service is halted and must be restarted

Show Suggested Answer





Actual exam question from VMware's 2V0-51.19

Question #: 20

Topic #: 1

[\[All 2V0-51.19 Questions\]](#)

Which three actions does the User Environment Manager Helpdesk Support Tool allow a desktop support engineer to perform? (Choose three.)

- A. Backing up a profile archive
- B. Searching and select users
- C. Resetting and restoring profile archives
- D. Restarting the (VMware UEM Service) FlexEngine service
- E. Viewing FlexEngine logs

Show Suggested Answer





Actual exam question from VMware's 2V0-51.19

Question #: 21

Topic #: 1

[\[All 2V0-51.19 Questions\]](#)

What are two supported operating systems for an instant clone remote desktop? (Choose two.)

- A. Microsoft Windows 10
- B. Microsoft Windows 8.1
- C. Microsoft Windows 8
- D. Microsoft Windows 7

[Show Suggested Answer](#)





Actual exam question from VMware's 2V0-51.19

Question #: 22

Topic #: 1

[\[All 2V0-51.19 Questions\]](#)

If both user assigned and machine assigned AppStacks are assigned to the same session, which AppStacks will be used?

- A. User assigned AppStacks will be used
- B. Both user and machine AppStacks will be used
- C. Machine assigned AppStacks will be used
- D. None; AppStacks will be disabled

Show Suggested Answer





Actual exam question from VMware's 2V0-51.19

Question #: 23

Topic #: 1

[\[All 2V0-51.19 Questions\]](#)

Which two View graphics technologies are hardware accelerated? (Choose two.)

- A. vDGA
- B. vGPU
- C. 3dfx
- D. Soft 3D

Show Suggested Answer





Actual exam question from VMware's 2V0-51.19

Question #: 24

Topic #: 1

[\[All 2V0-51.19 Questions\]](#)

What is the last step that must be completed to prepare a desktop virtual machine for use in a linked clone pool?

- A. Install VMTools on the virtual machine
- B. Turn on the virtual machine and then take a snapshot
- C. Install the Horizon View Agent on the virtual machine
- D. Shut down the virtual machine and then take a snapshot

Show Suggested Answer





Actual exam question from VMware's 2V0-51.19

Question #: 25

Topic #: 1

[\[All 2V0-51.19 Questions\]](#)

How can an administrator lock down access to the User Environment Manager management console?

- A. By disabling the Configure ribbon button
- B. By using the Lock down access to VMware UEM Management Console policy setting
- C. By locking access to the VMware UEM Management Console ADMX template
- D. By disabling access to the User Environment, Personalization, Condition Set, and Application Migration ribbons

Show Suggested Answer





Actual exam question from VMware's 2V0-51.19

Question #: 26

Topic #: 1

[\[All 2V0-51.19 Questions\]](#)

A Microsoft Windows Server Operating System master image is being developed for use as a single-session host.

Which two steps must the administrator perform before installing VMware Horizon Agent? (Choose two.)

- A. Install the Remote Desktop Services Role
- B. Verify that the Remote Desktop Services role is not installed
- C. Install Service Pack 1 for Windows Server 2008 R2 or Windows Server 2012 R2
- D. Install the Microsoft IIS Service

Show Suggested Answer





Actual exam question from VMware's 2V0-51.19

Question #: 27

Topic #: 1

[\[All 2V0-51.19 Questions\]](#)

Which two guest virtual machine components provide the best performance in a View virtual desktop? (Choose two.)

- A. vmxnet3
- B. BusLogic
- C. PVSCSI
- D. e1000

Show Suggested Answer





Actual exam question from VMware's 2V0-51.19

Question #: 28

Topic #: 1

[\[All 2V0-51.19 Questions\]](#)

In order for an administrator to utilize a Citrix deployment that includes Citrix NetScaler with VMware Identity Manager, what does the administrator need to deploy?

- A. A custom ICA file
- B. Integration Broker
- C. Citrix Receiver
- D. Citrix web interface

Show Suggested Answer





Actual exam question from VMware's 2V0-51.19

Question #: 29

Topic #: 1

[\[All 2V0-51.19 Questions\]](#)

During an installation of View Connection Server, the Install HTML Access option setting is not being displayed in the installer.

What is the probable cause?

- A. FIPS mode is disabled
- B. Configure Windows Firewall automatically option is selected
- C. IPv6 is selected as Internet Protocol (IP)
- D. IPv4 is selected as Internet Protocol (IP)

Show Suggested Answer



Actual exam question from VMware's 2V0-51.19

Question #: 30

Topic #: 1

[\[All 2V0-51.19 Questions\]](#)

An administrator installs the Horizon Agent on a Linux virtual machine, and the error

Agent Registration Failed -
is displayed.

What might be two causes for this error? (Choose two.)

- A. The Linux virtual machine was not joined to the Active Directory
- B. The View Connection Server FQDN, user name, or password was incorrect
- C. There is not enough free space in the /var partition
- D. The View administrator password contains a special character that was not escaped

Show Suggested Answer





Actual exam question from VMware's 2V0-51.19

Question #: 31

Topic #: 1

[\[All 2V0-51.19 Questions\]](#)

An administrator is unable to use a desktop as the parent for an instant clone desktop pool.

What is the most likely cause?

- A. When installing the Horizon View Agent, the Client Drive Redirection option was selected
- B. When installing the Horizon View Agent, the VMware Horizon Instant Clone Agent option was selected
- C. When installing the Horizon View Agent, the VMware Horizon View Composer Agent option was selected
- D. When installing the Horizon View Agent, the vRealize Operations Desktop Agent option was selected

Show Suggested Answer





Actual exam question from VMware's 2V0-51.19

Question #: 32

Topic #: 1

[\[All 2V0-51.19 Questions\]](#)

What are two required Active Directory permissions for the Instant Clone Domain Admin account? (Choose two.)

- A. Read all properties
- B. Write all properties
- C. Create computer objects
- D. Full control

Show Suggested Answer



Actual exam question from VMware's 2V0-51.19

Question #: 33

Topic #: 1

[\[All 2V0-51.19 Questions\]](#)

When preparing a master image for a virtual desktop infrastructure environment, how should disk defragmentation be configured?

- A. Run a disk defragmentation and then schedule automatic defragmentation tasks prior to publishing the desktop
- B. Do not run a disk defragmentation but schedule automatic defragmentation tasks prior to publishing the desktop
- C. Run a disk defragmentation and then disable automatic defragmentation tasks prior to publishing the desktop
- D. Do not run a disk defragmentation but disable automatic defragmentation tasks prior to publishing the desktop

Show Suggested Answer





Actual exam question from VMware's 2V0-51.19

Question #: 34

Topic #: 1

[\[All 2V0-51.19 Questions\]](#)

How does User Environment Manager use the Profile Archive file share?

- A. It stores Flex configuration files
- B. It stores the FlexEngine executable files for distribution
- C. It stores the user personalization settings
- D. It stores backups of the user personalization settings

Show Suggested Answer



Actual exam question from VMware's 2V0-51.19

Question #: 35

Topic #: 1

[\[All 2V0-51.19 Questions\]](#)

Review the exhibit.

Resource Pool	Session State	Object Type	Protocol	Session Duration(min)	Logon Duration (sec)	User
Test	Connected	VDI Desktop Sess...	PCoIP	1.01	?	_____
		VDI Desktop Sess...				
		VDI Desktop Sess...				
		VDI Desktop Sess...				



While investigating slow logins, the logon duration is missing as shown in the exhibit.

What two actions will report logon duration? (Choose two.)

- A. Restart the Horizon Broker Agent
- B. Reboot all Horizon Connection Servers
- C. Enable the logon duration option in the Horizon Broker Agent configuration
- D. Synchronize time on Horizon Broker Agent, Desktop Agent and Events DB

Show Suggested Answer



Actual exam question from VMware's 2V0-51.19

Question #: 36

Topic #: 1

[\[All 2V0-51.19 Questions\]](#)

Which two databases are supported by App Volumes 2.x? (Choose two.)

- A. Microsoft SQL Server 2012 SP3
- B. Microsoft SQL Server Express 2008
- C. Oracle 11g
- D. vPostgres

[Show Suggested Answer](#)





Actual exam question from VMware's 2V0-51.19

Question #: 37

Topic #: 1

[\[All 2V0-51.19 Questions\]](#)

What task is a prerequisite before installing View Composer?

- A. Enable TLSv1.0 security protocol
- B. Create a database and data source name (DSN)
- C. Configure an SSL Certificate for View Composer that is signed by a Certificate Authority (CA)
- D. Pair the connection server with the security server

Show Suggested Answer





Actual exam question from VMware's 2V0-51.19

Question #: 38

Topic #: 1

[\[All 2V0-51.19 Questions\]](#)

An administrator is configuring a rule for an Access Policy in VMware Identity Manager.

Which three settings can be configured to manage user access to their apps portal as a whole, or to specified Web application? (Choose three.)

- A. Network Range
- B. Application category
- C. Device Type
- D. Rule Schedule
- E. Authentication Type

Show Suggested Answer





Actual exam question from VMware's 2V0-51.19

Question #: 39

Topic #: 1

[\[All 2V0-51.19 Questions\]](#)

When troubleshooting issues with the View Agent, which tool can be used to generate a Data Collection Tool (DCT) bundle?

- A. mslexec
- B. vadmin
- C. vdmutil
- D. lmvutil

Show Suggested Answer





Actual exam question from VMware's 2V0-51.19

Question #: 40

Topic #: 1

[\[All 2V0-51.19 Questions\]](#)

When configuring Horizon in FIPS mode, what security protocol is the default?

- A. TLSv1.0
- B. SSLv3
- C. SSLv1
- D. TLSv1.2

Show Suggested Answer





Actual exam question from VMware's 2V0-51.19

Question #: 41

Topic #: 1

[\[All 2V0-51.19 Questions\]](#)

One of the datastores containing a linked clone desktop pool is running out of disk space and an administrator adds a second datastore. Which operation should the administrator perform to resolve the issue?

- A. Refresh
- B. Storage vMotion
- C. Recompose
- D. Rebalance

Show Suggested Answer





Actual exam question from VMware's 2V0-51.19

Question #: 42

Topic #: 1

[\[All 2V0-51.19 Questions\]](#)

Within User Environment Manager, which is the correct option to Turn Off the FlexEngine Config File Processing at logon and logoff for a particular application or setting?

- A. Uncheck the Enable DirectFlex for this config file option in the DirectFlex settings tab
- B. Disable the DirectFlex "" advanced settings within the VMware UEM GPO
- C. Disable by right-clicking the application or setting in the tree view
- D. Uncheck the Process during logon and logoff option in the Advanced settings tab

Show Suggested Answer





Actual exam question from VMware's 2V0-51.19

Question #: 43

Topic #: 1

[\[All 2V0-51.19 Questions\]](#)

When integrating a Citrix deployment in VMware Identity Manager, what can be done in the Administration Console with Citrix resources?

- A. Entitle users to those Citrix resources
- B. View the Citrix resources and their entitlements
- C. Modify the settings of the Citrix resources
- D. Manage Citrix-published applications and Citrix-published desktops

Show Suggested Answer

